



**muhimbi**  
Trading as Nutrient

# **PDF Converter for SharePoint - Installation & Administration Guide**

Muhimbi Ltd trading as Nutrient

**Version 12.2**

## Document Control

Draft	Author	Date	Comment
3.0 – 10.1.2	Muhimbi	12/11/2009 - 07/10/2021	Historical versions
10.2	Muhimbi	30/03/2022	Updated for version 10.2
10.2.1	Muhimbi	08/03/2022	Updated for version 10.2.1
10.3	Stephen Carter	02/05/2023	Updated for version 10.3
10.3.1	Balazs Molnar	22/08/2023	Updated for version 10.3.1
10.4	Stephen Carter	06/10/2023	Updated for version 10.4
11.0	Stephen Carter	15/11/2023	Updated for version 11.0
11.1	Stephen Carter	28/03/2024	Updated for version 11.1
12.0	Stephen Carter	24/11/2024	Updated for version 12.0
12.2	Stephen Carter	25/03/2025	Updated for version 12.2

## Purpose and audience of document

This document describes the installation steps as well as general administrative topics related to the Muhimbi PDF Converter for SharePoint.

The intended audience is anyone involved in the installation and administration of this solution.

## Rebranding

Muhimbi, Aquaforest, Orpalis, PSPDFKit and Integrify have rebranded as Nutrient.io to align our vision for the future.

Our naming and branding of products is changing to create a cohesive suite of offerings.

This edition will be the last version under the Muhimbi PDF Converter brand.

## Disclaimer

© Muhimbi trading as Nutrient. All rights reserved. No part of this document may be altered, reproduced or distributed in any form without the expressed written permission of Muhimbi.

This document was created strictly for information purposes. No guarantee, contractual specification or condition shall be derived from this document unless agreed to in writing. Muhimbi reserves the right to make changes in the products and services described in this document at any time without notice and this document does not represent a commitment on the part of Muhimbi in the future.

While Muhimbi uses reasonable efforts to ensure that the information and materials contained in this document are current and accurate, Muhimbi makes no representations or warranties as to the accuracy, reliability or completeness of the information, text, graphics, or other items contained in the document. Muhimbi expressly disclaims liability for any errors or omissions in the materials contained in the document and would welcome feedback as to any possible errors or inaccuracies contained herein.

Muhimbi shall not be liable for any special, indirect, incidental, or consequential damages, including without limitation, lost revenues or lost profits, which may result from the use of these materials. All offers are non-binding and without obligation unless agreed to in writing.

## Contents

<b>1</b>	<b>Introduction</b>	<b>5</b>
1.1	<i>Solution architecture</i>	6
1.2	<i>Prerequisites</i>	7
<b>2</b>	<b>Deployment</b>	<b>8</b>
2.1	<i>Before you begin</i>	8
2.2	<i>Introduction &amp; High level architecture</i>	9
2.3	<i>Installing Prerequisites &amp; Dependencies</i>	9
2.3.1	.Net framework 4	9
2.3.2	MS-Office	10
2.3.3	Ghostsript	11
2.3.4	SharePoint PDF Icon	11
2.3.5	Chromium HTML to PDF converter	12
2.4	<i>Installation steps</i>	13
2.5	<i>Post installation steps</i>	20
2.5.1	Validate converters	20
2.5.2	Installing the License	21
2.5.3	SharePoint Feature Activation / Deactivation	22
2.5.4	Enabling 3 <sup>rd</sup> party integration (Nintex, K2)	23
2.6	<i>Post Installation configuration</i>	24
2.6.1	Enabling converters / Specifying the location of the Conversion Service	24
2.6.2	Fine-tuning the Document Conversion service	25
2.7	<i>Hardening the Conversion Service</i>	42
2.8	<i>Un-installation</i>	43
2.9	<i>Upgrading from a previous version</i>	43
2.10	<i>Adding OCR languages for GdPicture OCR engine</i>	44
<b>3</b>	<b>Troubleshooting &amp; Other common tasks</b>	<b>45</b>
3.1	<i>Windows Event Log</i>	45
3.2	<i>SharePoint Trace Log</i>	45
3.3	<i>Document Converter Trace Log</i>	46
3.4	<i>Common issues &amp; Errors</i>	46
3.4.1	Your account is not allowed to deploy SharePoint Solutions	46
3.4.2	Errors on newly added servers	46
3.4.3	An evaluation message is displayed in the UI and converted documents	46
3.4.4	'Unknown Error' or 'resource object not found'	48
3.4.5	Documents using non standard fonts (e.g. Japanese) are not converted properly / The fonts in the destination document are not correct	49
3.4.6	Error messages related to printer drivers or the printer spooler are logged	49
3.4.7	Problems converting InfoPath forms without a shared XSN file	50
3.4.8	The 'Convert to PDF' context menu is displayed twice	50
3.4.9	InfoPath forms using Ink controls fail to convert	50
3.4.10	Error 403 (Forbidden) when converting InfoPath forms	50
3.4.11	InfoPath files are converted using an old version of the XSN template	50

3.4.12	Nintex Workflow Activities are not working as expected after upgrading	51
3.4.13	Event Manager error after uninstallation	51
3.4.14	Files uploaded via Windows Explorer do not trigger 'Insert' watermarks	51
3.4.15	'Watermark on Open' does not show watermarks	51
3.4.16	Changing the default bookmark and sort fields when merging files	52
<b>Appendix - Using InfoPath with External Data Sources</b>		<b>53</b>
	<i>Details for InfoPath 2007</i>	53
	<i>Details for InfoPath 2010 &amp; 2013</i>	55
3.4.17	Digitally signing forms	55
3.4.18	Using Muhimbi's 'AutoTrustForms' feature	55
<b>Appendix – Switching between InfoPath Converters</b>		<b>57</b>
	<i>Enabling the high fidelity InfoPath Converter</i>	57
	<i>Enabling the legacy InfoPath Converter</i>	57
<b>Appendix - Post processing PDF output to PDF/A</b>		<b>58</b>
<b>Appendix - Unattended (un)installation</b>		<b>60</b>
	<i>Installation</i>	60
	<i>Uninstallation</i>	61
	<i>Upgrading</i>	61
<b>Appendix - Advanced Deployment Scenarios</b>		<b>62</b>
<b>Appendix - Using Word Automation Services</b>		<b>66</b>
<b>Appendix - STSADM Commands</b>		<b>70</b>
<b>Appendix - Creating Custom Converters</b>		<b>72</b>
<b>Appendix - Invoke 3<sup>rd</sup> party Converters</b>		<b>77</b>
<b>Appendix – Deploying K2 Integration facilities</b>		<b>79</b>
	<i>Prerequisites</i>	79
	<i>Copy installation files</i>	79
	<i>Register the Service Type</i>	80
	<i>Register Service Instance</i>	81
	<i>Create Smart Objects</i>	82
	<i>Upgrading</i>	84
	<i>K2 Training</i>	85
<b>Appendix - Relevant articles on the Muhimbi Blog</b>		<b>86</b>
<b>Appendix - Licensing</b>		<b>88</b>

# 1 Introduction

**If you are keen to get the software installed without any additional guidance and background information then please proceed straight to section 2 *Deployment*.**

This document describes the installation steps as well as general administrative topics related to the *Muhimbi PDF Converter for SharePoint*.

The intended audience is anyone involved in the installation and administration of this solution. It is assumed that the audience has some familiarity with administering SharePoint and have been given the privileges to install and deploy solutions to the SharePoint farm.

From time to time you will see screenshots of different SharePoint versions in this document. Unless mentioned otherwise the installation instructions and general use of the software is the same on all supported versions of SharePoint.

For more details about this product please see:

1. Product Information:  
<https://www.muhimbi.com/Products/PDF-Converter-for-SharePoint>
2. Product Overview:  
<https://www.muhimbi.com/guides/pdf-converter/>
3. Knowledge Base:  
<https://www.muhimbi.com/guides/pdf-converter/sharepoint/knowledge-base/>
4. Frequently Asked Questions:  
<https://www.muhimbi.com/guides/pdf-converter/sharepoint/faq/>
5. Release Notes:  
<https://www.muhimbi.com/guides/pdf-converter/sharepoint/release-notes/>
6. User Guide:  
<https://www.muhimbi.com/guides/pdf-converter/sharepoint/>
7. Developer Guide:  
<https://www.muhimbi.com/guides/pdf-converter-services/>
8. PDF Converter related content on the Muhimbi Blog:  
<https://www.muhimbi.com/blog/tags/pdf-converter/>

To keep on top of the latest news and releases, please subscribe to our blog or twitter feed at <https://www.muhimbi.com/contact>

## 1.1 Solution architecture

The *Muhimbi PDF Converter for SharePoint* is a highly optimised solution to convert, merge, watermark, secure and OCR documents stored in SharePoint - including MS-Office, InfoPath, HTML, MSG (email), AutoCAD and image-based files - to PDF Format. It can also be used to extract Form data from PDF files in FDF, XFDF and XML format.

Documents can either be converted interactively via a user friendly SharePoint screen or via a Custom Action as part of a SharePoint Designer, Nintex or K2 workflow. For a full overview of the product's abilities see the separate User Guide.

The solution consists of two parts:

1. **SharePoint User interface and Workflow actions:** This part of the solution is deployed automatically to all SharePoint Servers in the farm.
2. **Document Converter Service:** A Windows Service that takes care of the actual document conversion, watermarking, OCR and applying document security. This service can be deployed either to a separate system / virtual machine or to one or more SharePoint Web Front End servers.

Conversions can be *scaled up* by running multiple conversions in parallel and *scaled out* using standard HTTP Load balancers. For details see *Appendix - Advanced Deployment Scenarios*.

To achieve optimal conversion quality, for some file formats the Document Converter Service uses MS-Office's own libraries in the background to carry out the actual conversion. Muhimbi's software stack ensures that this happens in a robust, reliable and scalable manner without taking up excessive system resources. Common and uncommon problems are detected and corrective action is taken automatically without requiring any attention from system administrators.

## 1.2 Prerequisites

The solution has been designed to work on an as wide as possible number of platforms. The prerequisites are as follows:

Operating Systems	Windows Server 2012 (including R2) Windows Server 2016 Windows Server 2019 Windows Server 2022
SharePoint versions	WSS 3.0, MOSS 2007, SharePoint Foundation / Server 2010, 2013, 2016, 2019 & SE
Office Version	Office 2010 / 2013 / 2016 / 2019 / 2021 applications for the relevant converters <sup>1</sup> .
.NET Framework	Version 4.8 (On SP2007 & SP2010 machines .NET 3.5 is required in addition to .NET 4.8)
Browser versions	Firefox, Google Chrome, Microsoft Edge, Apple Safari and other WebKit / Chromium based browsers.
System Memory	This depends on the size and complexity of the documents. We recommend a minimum of 1.5GB.
CPU	Any CPU that can comfortably run SharePoint is suitable. We recommend one or more multi-core CPUs.
Disk Space	This product requires 800MB of space.

---

<sup>1</sup> Please do not use Office 2024, it is not considered stable for server use. Office 2021 supports all Office 2024 documents just fine.

## 2 Deployment

Please note that, unless specified otherwise, installation instructions are the same for all SharePoint versions. When upgrading from a previous version of the Muhimbi PDF Converter, please follow the instructions in section 2.9.

If you are experiencing any problems then please check out chapter 3 – *Troubleshooting & Other common tasks* or contact [support@muhimbi.com](mailto:support@muhimbi.com).

***Please do not skim over the information and instructions in this chapter. Installation is generally very easy, but it is essential that you follow the correct steps.***

***If your SharePoint environment is locked down, or your organisation / IT department does not allow deployment of 3<sup>rd</sup> party software, then consider installing the Muhimbi PDF Converter Add-in available from the SharePoint App Store, which works in both Online and on-premise environments.***

### 2.1 Before you begin

Before starting the deployment process, please make sure you have access to the following:

1. A user account with the appropriate privileges to deploy both Windows software and SharePoint WSP files. See section 3.4.1 *Your account is not allowed to deploy SharePoint Solutions* for details.
2. A user account to run the Conversion Service under, with the following attributes:
  - a. Use a real account, **do not** use built-in Windows accounts such as *Local System* or *Local Service*.
  - b. Local administrator on the server the Conversion Service will be installed on.
  - c. In order to convert InfoPath files this account requires 'Read' access on the SharePoint location where the InfoPath XSN files, associated with the InfoPath XML files, are stored. An easy way to do this is by creating a 'Read Only' security policy in SharePoint for this account.

It is worth considering using the SharePoint Web Application pool account as it will most likely match all requirements.

3. For Production deployments, license file(s) for the Muhimbi PDF Converter. A license file is not needed to deploy the evaluation version.
4. If there is a requirement to convert MS-Office formats such as MS-Word, Excel and InfoPath then please make sure you have access to a full MS-Office installation set (**not the Office 365 / Click-to-run versions**).
5. If the server the deployment is carried out on does not have an active internet connection AND you require PDF/A output, or conversion of InfoPath files, then please download [Ghostscript 10.01.0](#) (**unless instructed to do so by our support desk, do not install any other version**). If your server is connected to the internet, then it will be downloaded automatically.



## 2.2 Introduction & High level architecture

The Muhimbi PDF Converter for SharePoint is made up of a number of separate elements:

1. **Conversion Service:** A central Conversion Service that does all the hard work such as converting and merging files, carrying out OCR, applying watermarks etc. This is a Windows Service that exposes a WCF based web services interface<sup>2</sup>, which is consumed by the SharePoint front end. This service is typically installed on one or more SharePoint App servers or a non-SharePoint server. Although it will work, we do not recommend running this service on Web Front End Servers.
2. **SharePoint Front End:** Several WSP files that add a very thin layer to the SharePoint Web Front End and Application servers including such facilities as conversion and configuration screens, workflow actions, real-time watermarking as well as the Muhimbi License Manager.

Unless the software is being deployed to a SharePoint farm consisting of just a single combined WFE / APP server, please read *Appendix - Advanced Deployment Scenarios* before continuing.

## 2.3 Installing Prerequisites & Dependencies

The PDF Converter is a comprehensive solution that includes a large number of different features. Some functionality depends on third party software that must be installed on the server running the Muhimbi Conversion Service only.

If your organisation is using FIPS, please make sure it is disabled on the server running the Muhimbi Conversion Service. This can be achieved using the "System cryptography: Use FIPS compliant algorithms for encryption, hashing, and signing" Local Security Policy. Microsoft is no longer recommending FIPS mode as it breaks perfectly valid and secure .net framework encryption as used by the Muhimbi PDF Converter.

### 2.3.1 .Net framework 4

In order to maximise compatibility with old as well as new systems, the Conversion Service has been built on version 4.0 of Microsoft's .NET framework. The installer will automatically detect, and if needed download, this framework on Windows Server 2008R2.

When deploying the Conversion Service on Windows Server 2012 or newer, deploy version 4.0 (or later) of the .net framework using Windows' Server Manager, or using the following command.

```
Dism /online /Enable-Feature /FeatureName:NetFx4 /All
```

---

<sup>2</sup> It runs as a 'self-hosted' web service and does not require IIS to be installed.

For systems running SharePoint 2007 or 2010, make sure that the .NET Framework 3.5 is installed as well. This is not needed on systems running SharePoint 2013 or later.

## 2.3.2 MS-Office

To ensure the quality of converted documents is 100% perfect, some converters have a dependency on external applications such as MS-Office. If it is a requirement to convert these file types then please install the relevant MS-Office applications, but only on the server that runs the Muhimbi Conversion Service. **There is no need to install MS-Office on your SharePoint Front End Servers. If deployment of Office is not possible then consider our App Store add-in, which does not require any installation steps.**

The supported file formats, and their dependencies, are as follows, please install the dependencies for the file formats needed in your environment.

Converter	Supported file types	Dependency
HTML & Web pages	html, htm, mht and any url that returns HTML such as .aspx or .jsp.	-
Image formats	gif, png, jpg, bmp, tif, tiff	-
AutoCAD formats	dwg, dxf	-
InfoPath forms	xml, infopathxml	InfoPath
Word Processing	doc, docx, docm, dot, rtf, txt, wps, xml, odt, ott, wpd	MS-Word, Word Automation Svc <sup>3</sup>
Emails	msg, eml	MS-Word
Spreadsheets	xls,xlsx, xlsm, xlsb, xml, csv, dif, ods, ots	Excel
Presentations	ppt, pptx, pptm, xml, odp, otp, pps, ppsx, ppsm	PowerPoint
Publisher	pub	Publisher
Vector formats	vsd, vdx, vdw, svg, svgz,	Visio
Postscript	ps, eps	Ghostscript

At the time of writing, it is recommended to use MS-Office

2019 or 2021 Professional Plus<sup>4</sup>, taking the following into account:

1. Remove older MS-Office versions from the conversion server as environments with mixed versions on the same system are not supported, even though it may work.
2. The minimum supported MS-Office version is Office 2007 SP2.
3. **If it is a requirement to convert InfoPath forms then you must install the 64 bit version of InfoPath when using 64 bit versions of Windows.**

<sup>3</sup> To use our Word Automation Services plug in see Appendix - Using Word Automation Services

<sup>4</sup> Please do not use Office 2024, it is not considered stable for server use. Office 2021 supports all Office 2024 documents just fine.

4. Do not install the *click-to-run* or *Office 365* editions of MS-Office. Those versions are not compatible. The full 'Professional Plus' version of MS-Office will need to be installed. Do not install trial or non-activated versions of MS-Office, they are not supported.

Microsoft does not recommend installing any MS-Office on the server running SharePoint. For MS-Office conversions, the PDF Converter must be installed (together with MS-Office) on a separate server.

Once MS-Office has been installed, please carry out the following steps:

1. Log in to the desktop of the server running the conversion service using the account the conversion service runs under or will run under.
2. Launch the various MS-Office applications and carry out Microsoft's activation process for the current user.
3. Close the MS-Office applications again.

**It is essential to execute these steps, even if Office has already been activated.**

### 2.3.3 Ghostscript

The Muhimbi PDF Converter relies on Ghostscript for a small subset of functionality. When installing the Muhimbi Conversion Service on a computer that does not have an active internet connection, which is not uncommon in data centers, AND you expect to use any of the features listed below, then you will need to deploy Ghostscript manually. If the server does have an active internet connection, then the Muhimbi installer will download and install Ghostscript automatically.

1. PDF/A output, a subset of the PDF format intended for long term archiving.
2. High fidelity InfoPath conversions.
3. Conversion of PostScript files to PDF

If you require any of these features, and your server does not have an active internet connection, then deploy Ghostscript manually, preferably before running the Muhimbi installer.

As of Ghostscript 10.1. there is no "silent install", so the installation process requires manual intervention.

1. Download [Ghostscript](#) 10.01.0 **Unless instructed by the Muhimbi support desk, do not install any other version.**
2. Run the Ghostscript installer and deploy it to the default path (select a different drive letter if needed, but leave the rest of the path unchanged)
3. Accept all default options.

### 2.3.4 SharePoint PDF Icon

Some SharePoint versions do not ship with a PDF icon. To make it easier to identify PDF files in document libraries, manually deploy the icon as explained

in [this blog post](#). Please note that this is not a requirement to successfully use the Muhimbi PDF Converter for SharePoint.

### 2.3.5 Chromium HTML to PDF converter

As of version 12.0, Blink HTML to PDF converter binaries (portable Chromium) are not included among the installation files.

If the Chrome application is installed system-wide, then it is used by default for this type of conversion.

If you wish to use a dedicated portable Chromium bundle supplied by Muhimbi, please download the appropriate version from our website:

- Version [109.0.5414.75](#) of Chromium for Windows Server 2008 R2 or Windows Server 2012 R2
- Version [114.0.5735.199](#) of Chromium for newer Windows versions

See 2.6.2.9 - *HTML specific switches* for deployment and configuration.

## 2.4 Installation steps

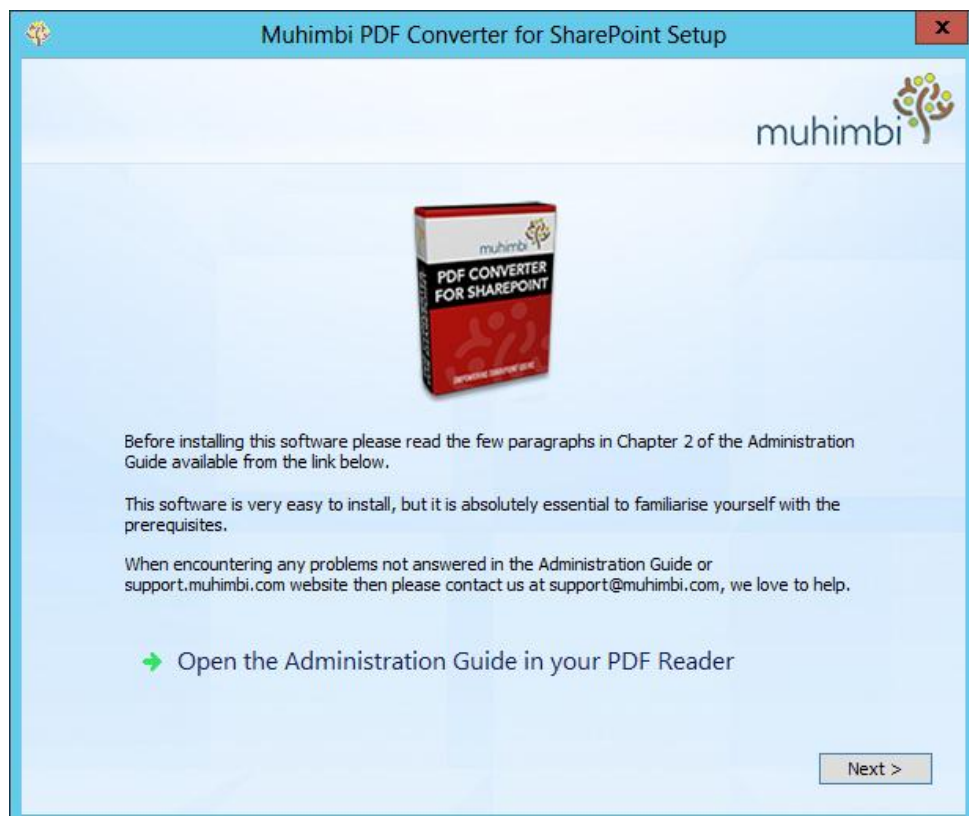
One of the key decisions to make before installing the Muhimbi PDF Converter for SharePoint is deciding which server to install the Conversion Service on. Unless you have a good reason not to, the best choice is *the SharePoint Application server with the most available resources*.

For details about carrying a silent installation, see *Appendix - Unattended (un)installation*.

When deploying to a Production or Disaster Recovery environment please make sure you are licensed appropriately as it is not just the Web Front End servers that require a license. For details see *Appendix - Licensing*.

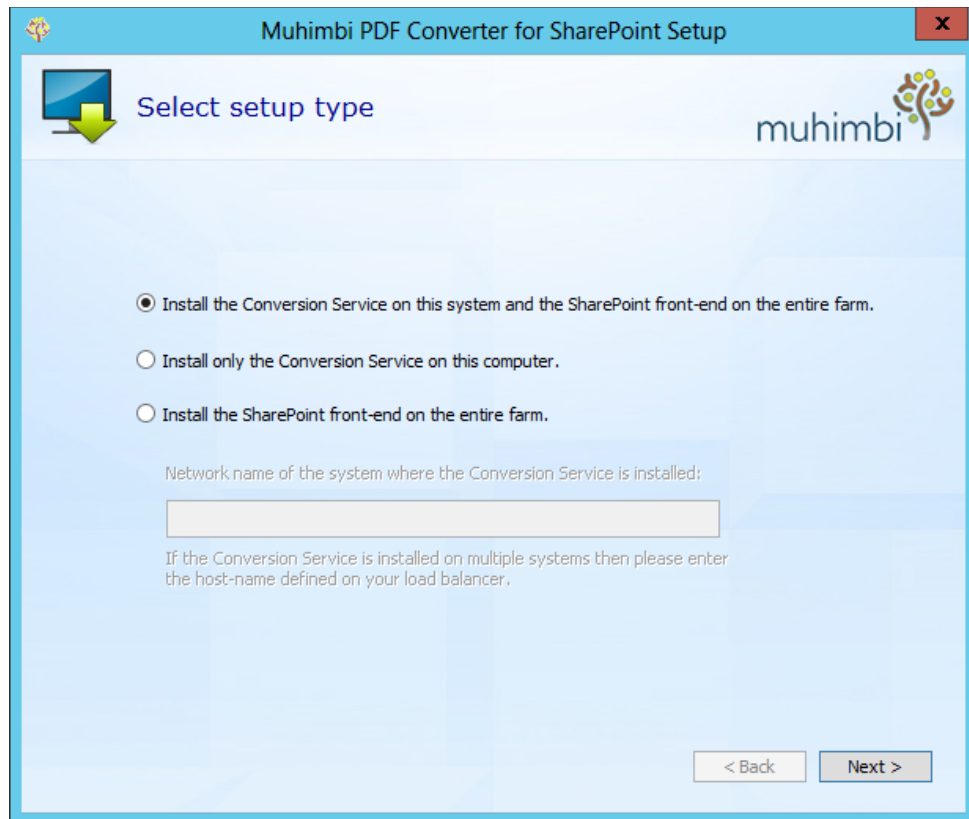
The installation steps are as follows:

1. Unless you have a good reason to use a different system, log in to the desktop of the server that will be used to run the Conversion Service, usually one of the App Servers, and launch setup.exe. This results in the following screen from where you can open the Administration Guide, *this* document.



2. Click *Next*, read and accept the license agreement and click *Next* again.

- The following screen provides a number of installation options. Unless the software is being installed in a very complex environment that includes load balancers, or the Conversion Service will run on a non-SharePoint server, select the option to *'Install the Conversion Service on this system and the SharePoint front-end on the entire farm'*.



When the installer is executed on a non-SharePoint server, this screen will default to the second option to deploy just the Conversion Service to the current system without deploying the SharePoint front-end.

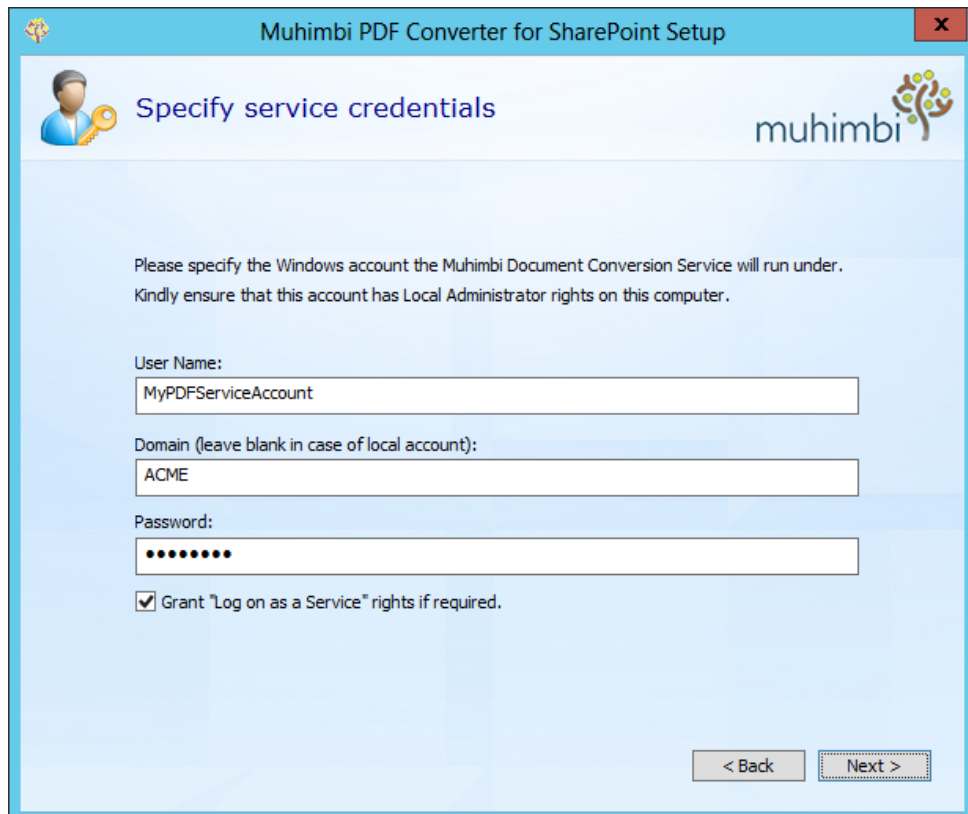
If the Conversion Service is already installed on a different server, e.g. a shared conversion server, or a conversion server behind a load balancer, then select the third option to deploy just the SharePoint front-end facilities. Please enter the name or ip-address of the conversion server before continuing to the next screen. The installer will verify that a Conversion Service is present on the specified system before continuing.

- Accept or change the default installation folder and click *Next* to continue.

5. Providing the conversion service is being deployed as part of the current installation process, you will be asked to specify the details of the Windows account the conversion service will run under.

This may be a local machine account (in that case leave the domain name empty) or a domain account (please enter the domain in the separate field). Please make sure this account matches the exact requirements specified in section 2.1 *Before you begin*.

Unless specified otherwise, the account will be granted 'Log on as a Service' rights automatically.



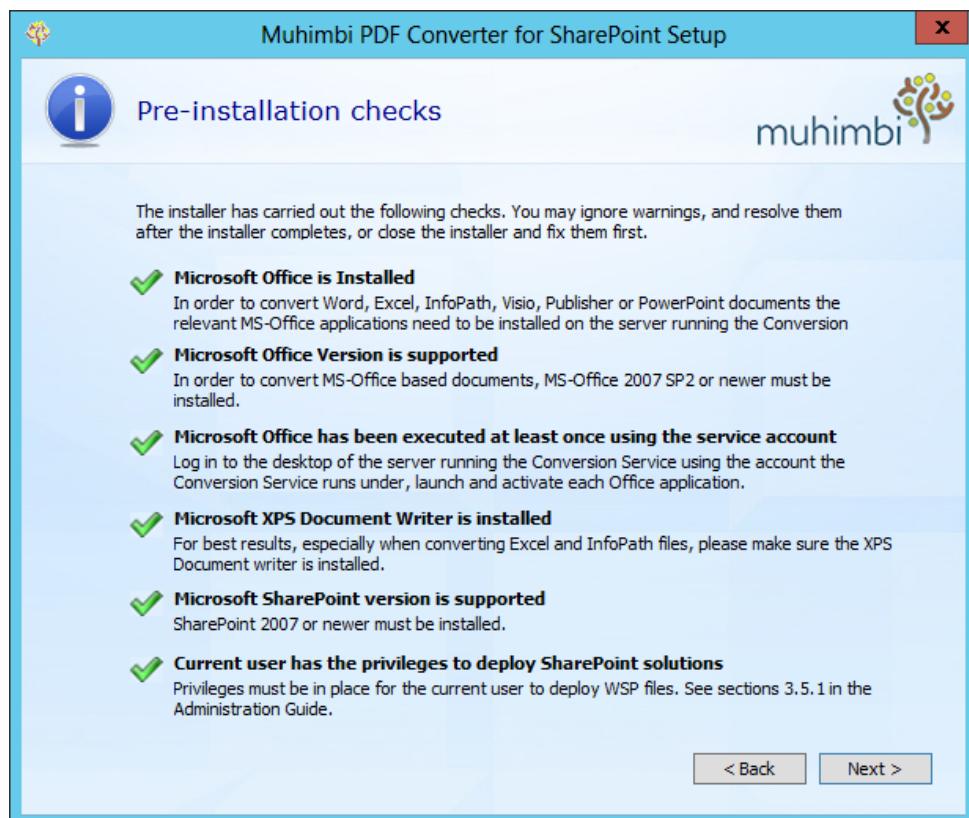
Click *Next* to validate the specified credentials and proceed to the next screen.



6. The installer will carry out a number of checks to validate that the environment the software is installed on matches the prerequisites specified in sections 2.1 - 2.3, and present the results on the next screen.

The actual checks carried out depend on the deployment scenario and includes topics such as:

1. Is the correct version of MS-Office installed and has it been activated?
2. Is the correct version of SharePoint installed?
3. Does the user have the appropriate privileges?

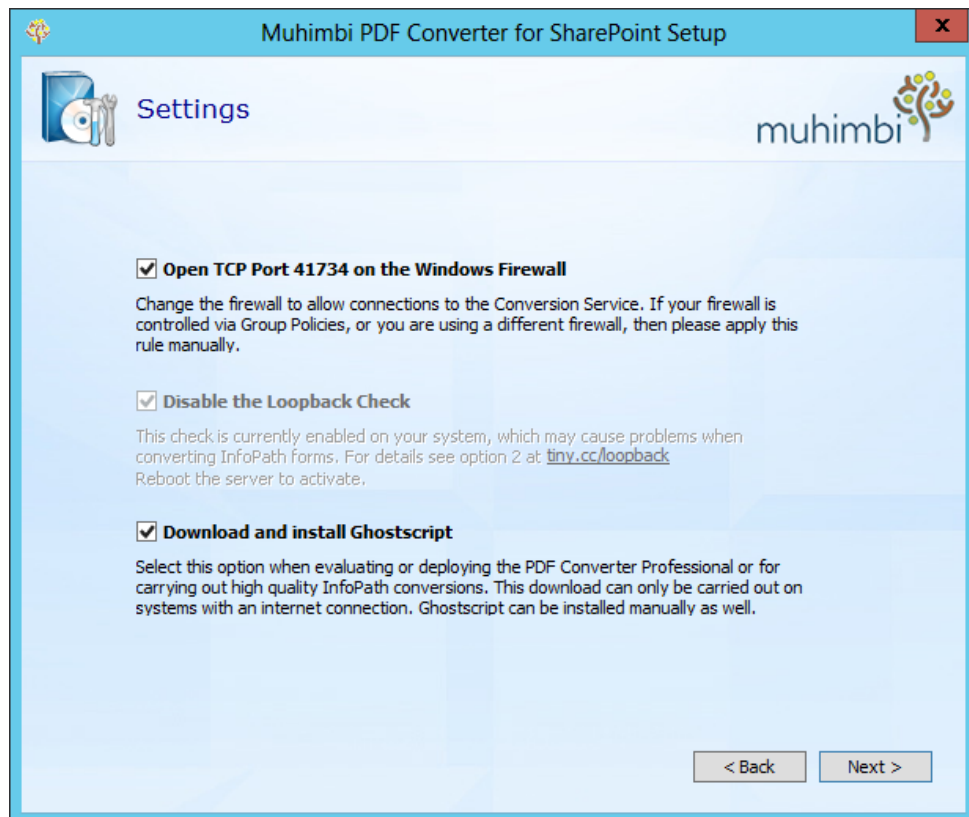


If all checks pass, and show a green tick mark, then continue to the next screen. However, if any of the checks fail then you have the option to continue. This may be suitable for situations where there is no need to carry out the conversion of any MS-Office related file types, in which case you may ignore the MS-Office related validation failures.

Any validation errors related to the installed SharePoint version as well as user account privileges must be corrected first. Close and restart the installer after making the appropriate changes.



7. If, as part of the current installation process, the Conversion Service is installed, the following screen will be displayed next.



- a. **Open TCP Port 41734 on the Windows Firewall:** In a multi-server farm it is essential that the front end servers can communicate with the conversion server. The installer can open the correct port automatically, but please take into account that this only works for a basic Windows Firewall installation. When deploying the software in an environment with a different firewall or when the firewall is automatically configured and locked down, you may need to open this port manually.<sup>5</sup>
- b. **Disable the Loopback Check:** In certain cases, a security feature in Windows makes it difficult to connect to a server by machine name, this is known as the *Loopback Check*. Providing this feature is enabled (the default in Windows) you can use the installer to disable it. If this feature is already disabled (perhaps by an administrator or another process) then you will not be able to change it using the Muhimbi installer. This prevents interoperability problems with other software. If you wish to change this setting by hand then see [this blog post](#).

<sup>5</sup> The port is only opened on the conversion server. If remote servers do not allow outgoing connections on port 41734 then the firewall rules on those servers will need to be adjusted manually.

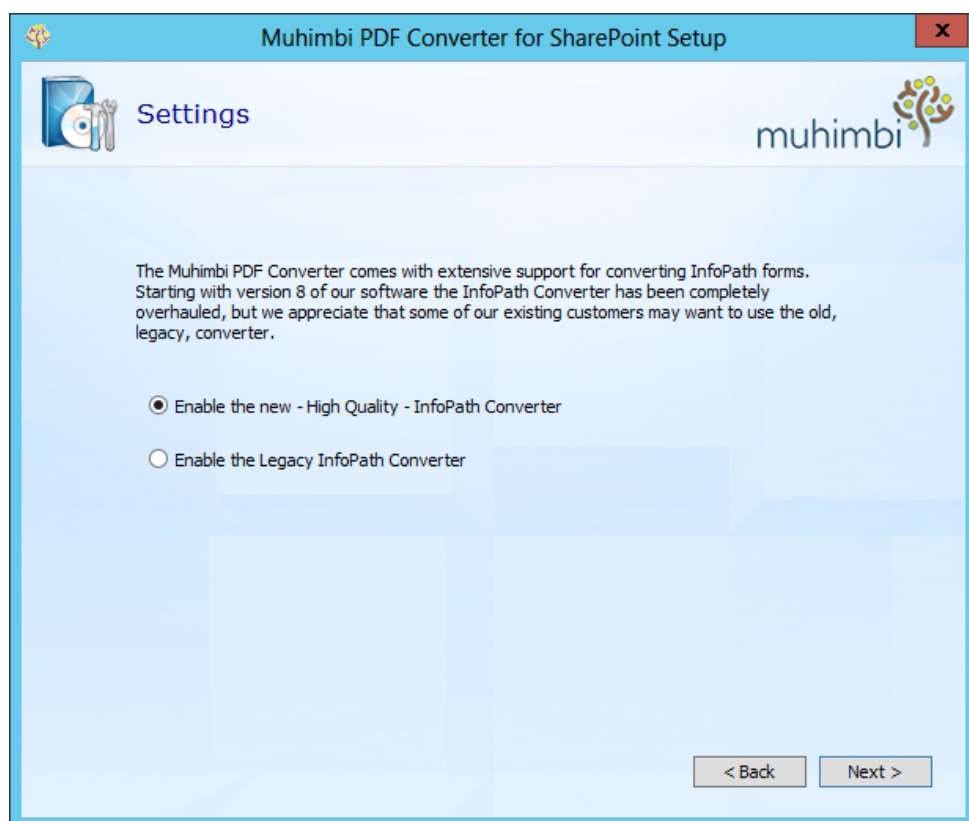
- c. **Download and install Ghostscript:** If you require any of the features listed under 2.3.3 AND the server the installer is being executed on has an active internet connection, then enable this option to automatically download and install Ghostscript. If the server is not connected to the internet, then follow the steps in section 2.3.3 to deploy Ghostscript manually.

As of Ghostscript 10.1. there is no “silent install”, so the installation process requires manual intervention, please follow the on-screen instructions.

8. Providing the Conversion Service is being installed as part of the current deployment cycle, the InfoPath configuration screen will be displayed next.

Unless the PDF Converter is being upgraded from a pre-8.0 version, and InfoPath conversions are already working perfectly, it is strongly recommended to accept the default values and enable the new *High quality InfoPath converter*<sup>6</sup>.

If the PDF Converter will be used to convert InfoPath forms, and the High Quality InfoPath converter is enabled, then please make sure Ghostscript is enabled as well. For details see point ‘c’ in the previous section.



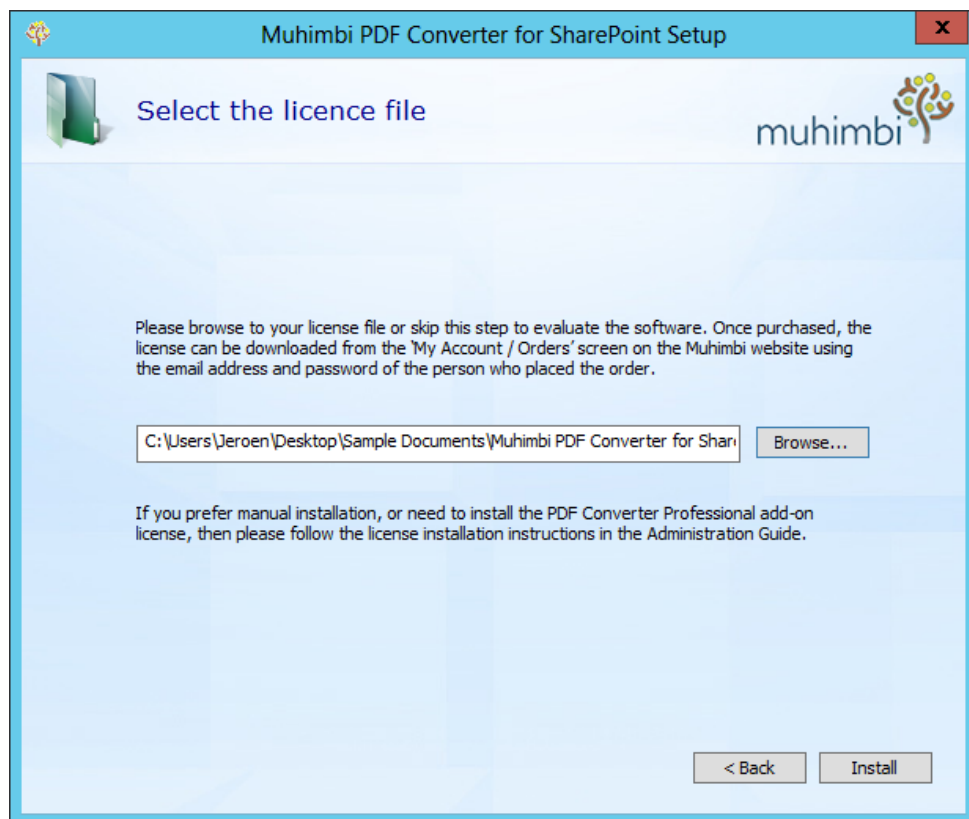
Please keep in mind that on 64-bit systems the new InfoPath converter only works in combination with the 64-bit version of InfoPath.

<sup>6</sup> For details about how to switch between InfoPath converters at any time, see *Appendix – Switching between InfoPath Converters*

Click *Next* to continue.

9. When deploying the PDF Converter to a Production or Disaster Recovery environment, use this screen to specify the location of the license file. Doing so is optional, when the license key is not specified the software will automatically run in trial mode.

To install the license at a later time - e.g. to activate a previously installed trial version, or when installing the PDF Converter Professional - please follow the instructions in section Installing the License.



Click *Next* to complete the installation process; this may take several minutes depending on the complexity of the SharePoint environment.

## 2.5 Post installation steps

Once the main installation process has completed, the software can be used to convert files using the SharePoint User Interface and build workflows using SharePoint Designer. However, before doing so it is recommended to verify that everything is working as expected and activate SharePoint features that are disabled by default such as the Nintex Workflow integration as well as the real-time Watermarking & Security facility.

### 2.5.1 Validate converters

Please verify that the software, and all prerequisites, has been deployed properly using the following steps.

1. Navigate to the *Muhimbi Document Converter Settings* screen:
  - a. **SharePoint 2007:** *Central Admin / Application Management / Muhimbi Document Converter Settings.*
  - b. **SharePoint 2010 and later:** *Central Admin / General Application Settings / Muhimbi Document Converter Settings.*
2. Check that authentication and connectivity between SharePoint and the Conversion Service is working correctly by clicking the *Test* button.
3. Select / deselect the converters relevant to your environment and click OK to save the changes.
4. Return to the previous screen and check conversion is working by clicking the *Validate Settings* button on the same screen.
5. Verify that the Web Front End servers can communicate with the Conversion Server using the following steps:
  - a. Navigate to a regular Document Library in a Site Collection of your choice.
  - b. Open the context menu of an MS-Word file (or any other file type conversion is enabled for).
  - c. A new option 'Convert to PDF' should now be visible, select it.
  - d. Accept the default settings and click the 'Convert' button.
  - e. The file should be converted without errors.

In case of errors please double check the installation steps, particularly section 2.3.2. If that doesn't help then please contact our friendly support desk at [support@muhimbi.com](mailto:support@muhimbi.com) for assistance.

### 2.5.2 Installing the License

The PDF Converter's installer provides the option to install the license key automatically. However, if the license key was not specified at the time of installation, or when installing the PDF Converter Professional add-on license, then please follow the procedure below.

***Note that the license key will need to be installed in 2 places. Please read the following carefully and do not skip any steps. If you have received multiple license files then repeat the steps for each license.***

#### Step 1 - Muhimbi License Manager

Open the Muhimbi License Manager, it can be found at:

- **SharePoint 2007:** *Central Administration / Operations / Global Configuration*
- **SharePoint 2010 and later:** *Central Administration / System Settings / Farm Management*

Click the 'Add License' button, open the license file in notepad, copy all text to the clipboard and paste it in the License Manager's License field. Click 'Save' to activate the license. ***Continue with step 2 below.***

#### Step 2 - Conversion Service folder

Copy the license file to the directory where the Conversion Service has been installed in. A shortcut to this folder (*Open Installation Folder*) can be found in the Windows Start Menu.

If you have purchased a license for the *PDF Converter Professional* as well then please make sure that license file is added using the same steps. Please note that a *PDF Converter Professional* license cannot be used unless a license for the *PDF Converter for SharePoint* is also in place.

After copying the license file, restart the Conversion Service using the *Windows Services Management Console* (services.msc) or the command line.

```
Net stop "Muhimbi Document Converter Service"
```

```
Net start "Muhimbi Document Converter Service"
```

## 2.5.3 SharePoint Feature Activation / Deactivation

The Muhimbi PDF Converter for SharePoint comes with a number of SharePoint Features that can be enabled / disabled at different levels. Some are enabled automatically whereas others must be enabled by hand.

The following SharePoint features are available

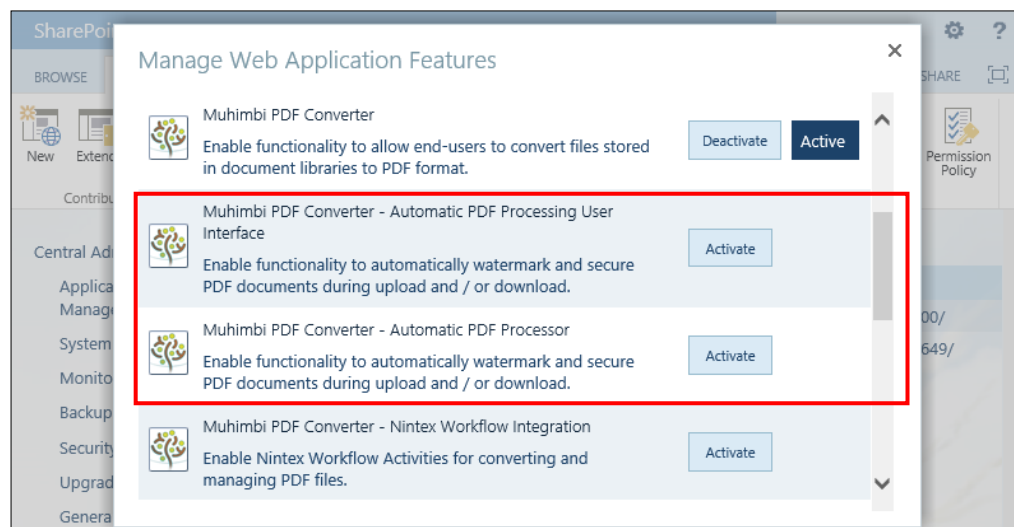
Feature Name	Scope	Enabled
<b>Muhimbi.PDFConverter.Farm</b> Enable the Workflow Activities and the Central Administration Configuration screen.	Farm	V
<b>Muhimbi.PDFConverter</b> Add 'Convert to PDF' to context menus / ribbons for all site collections in the Web Application.	Web App	V
<b>Muhimbi.PDFConverter.Nintex.WebApp</b> <sup>7</sup> Add Nintex Workflow actions on systems that have this third-party product installed.	Web App	-
<b>Muhimbi.PDFConverter.Watermarker.UI.WebApp</b> Enable the user interface for the automatic watermarking and security facilities on all site collections in the Web Application.	Web App	-
<b>Muhimbi.PDFConverter.Watermarker.Processor.WebApp</b> Enable the automatic watermarking and security processing logic on all site collections in the Web Application	Web App	-
<b>Muhimbi.PDFConverter.Convert.Site</b> Add 'Convert to PDF' to context menus / ribbons for a single site collection.	Site Coll.	-
<b>Muhimbi.PDFConverter.ConvertAndDownload.Site</b> Add the 'Download as PDF' option to the file's context menu.	Site Coll.	-
<b>Muhimbi.PDFConverter.ConvertWebPage.Site</b> Add the 'Convert Page to PDF' option to the user's Personal Actions menu.	Site Coll.	-
<b>Muhimbi.PDFConverter.Watermarker.UI.Site</b> Add the user interface for the automatic watermarking and security facilities to the site collection.	Site Coll.	-
<b>Muhimbi.PDFConverter.API.WebApp</b> Add K2 Prerequisites, Feature is only present on SharePoint 2007 and not needed by newer SharePoint versions.	Web App	-
<b>Muhimbi.PDFConverter.SP2013_WebFeature</b> Enable workflow actions for the optional Workflow Manager workflows introduced in SharePoint 2013.	Web	'-

The *Muhimbi.PDFConverter* and *Muhimbi.PDFConverter.Convert.Site* features are identical with the exception of the scope. The *WebApplication* scoped feature is enabled by default and adds PDF Converter options to all site

<sup>7</sup> Due to an issue with Nintex Workflow, please carry out an IISRESET after deactivating this feature.

collections in the web application. If you prefer to enable PDF Conversion at the Site Collection level, then make sure the *WebApplication* scoped feature is disabled. Do not leave both features enabled at the same time to prevent duplicate menu options.

The same mechanism is used by the *Muhimbi.PDFConverter.Watermarker.UI.WebApp* and *Muhimbi.PDFConverter.Watermarker.UI.Site* Features. Use the 'WebApp' version of the Feature to enable it on all site collections. If you just wish to use it on a select number of site collections, then disable it at the Web Application level and enable it at the Site Collection level.



Please note that certain SharePoint Features have internal dependencies. For example, in order to enable the *Automatic PDF Processing User Interface* Feature at either the Site Collection or Web Application level, the *Automatic PDF Processor* Feature must be enabled first, which must be done at the Web Application level.

## 2.5.4 Enabling 3<sup>rd</sup> party integration (Nintex, K2)

The PDF Converter can integrate with a number of 3<sup>rd</sup> party products. For details see:

- **Nintex Workflow:**
  - For use with the on-premise version of the Muhimbi PDF Converter for SharePoint (2007-2019) use [this Knowledge Base Article](#)
  - For use with the SharePoint Online version of the Muhimbi PDF Converter, see [this blog post](#), as well as [this one](#).
- **K2 blackpearl:** Appendix – Deploying K2 Integration facilities



## 2.6 Post Installation configuration

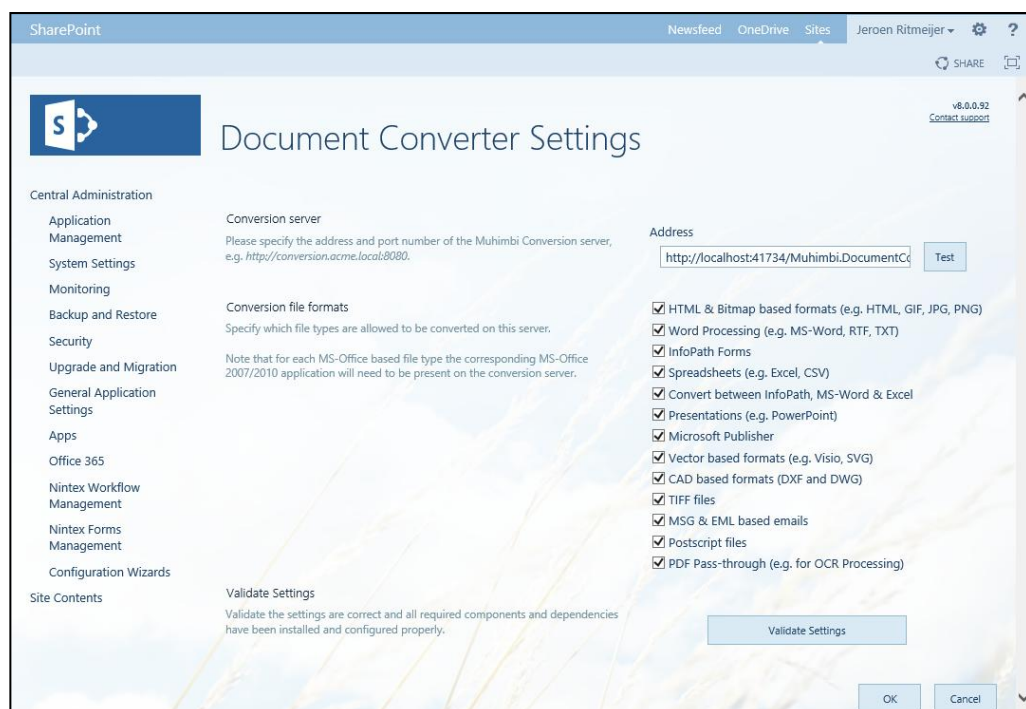
### 2.6.1 Enabling converters / Specifying the location of the Conversion Service

The PDF Converter's installer automatically updates the address of the Conversion Service and, for new installations, enables the converters for all file types. If any of these settings need to be changed, e.g. because the Conversion Service is located behind a load balancer or has been moved to a different server, then this can be changed using the PDF Converter's central administration screen accessible from:

- SharePoint 2007:** *Central Admin / Application Management / Muhimbi Document Converter Settings.*
- SharePoint 2010 and later:** *Central Admin / General Application Settings / Muhimbi Document Converter Settings.*

See *Appendix - Advanced Deployment Scenarios* for more information.

The configuration screen allows individual converters to be enabled or disabled, the address of the Conversion Service to be changed, and diagnostic tests to be carried out.



Connectivity with the Conversion Service can be verified by clicking the *Test* button. This validates the address as well as the authentication settings.

To verify that the prerequisites for the various converters have been installed correctly, click the *Validate Settings* button. After a few seconds the results will be displayed underneath the button.

Any custom converters that may have been added to the system need to be enabled manually using this screen.



### 2.6.2 Fine-tuning the Document Conversion service

The settings for the Document Conversion Service can be changed by editing the *Muhimbi.DocumentConverter.Service.exe.config* file located in the directory the Conversion Service has been installed in<sup>8</sup>.

The various settings that can be changed are described below. Note that the Service must be restarted after making changes to the configuration file. Use the *Windows Services* MMC or the command line to do this:

```
Net stop "Muhimbi Document Converter Service"
Net start "Muhimbi Document Converter Service"
```

*Please note that some additional settings related to the post processing of PDF/A files can be found in Appendix - Post processing PDF output to PDF/A.*

#### 2.6.2.1 Authentication

To make the initial installation as simple as possible, particularly for environments that access the Conversion Service from non-Windows based platforms, anonymous access is enabled by default.

Although in general Production environments are shielded by a firewall, depending on your organisation you may want to enable an extra layer of authentication.

Authentication and Authorization are controlled by the following attributes and elements in the *Config* file:

- **ConversionClientsGroup:** The name of the Windows group that contains the accounts that are allowed to carry out conversions.
- **ConversionAdministratorsGroup:** The name of the Windows group that contains the accounts that can execute typical Administrative tasks such as running diagnostics.
- **Security mode:** Either use *TransportCredentialOnly* or *None*.
- **ClientCredentialType:** The type of credential used for client authentication. Either use *Windows* or *None*.

The Document Conversion Service uses Microsoft's Windows Communication Foundation (WCF) framework. For further details about configuring security have a look at Microsoft's MSDN site at <https://learn.microsoft.com/en-us/dotnet/framework/wcf/feature-details/programming-wcf-security>.

---

<sup>8</sup> The Windows Start menu contains a shortcut named *Open Installation Folder*.

The following table contains a number of common scenarios:

	Conversion Clients Group	Conversion Administrators Group	Security mode	Client Credential Type
Anonymous	<leave empty>	<leave empty>	"None"	"None"
SharePoint	wss_wpg	wss_admin_wpg	TransportCredentialOnly	Windows

If you intend to use the Document Conversion Service from a SharePoint environment, then it is recommended to configure security as per the previous table.

This will restrict use to members of the standard SharePoint *wss\_wpg* and *wss\_admin\_wpg* groups. These groups, however, are local to the SharePoint machine, which may cause problems if the Document Conversion Service is installed on a separate system that does not have these local groups.

The solution is to either manually create these groups on the server hosting the Document Converter, and populate them with the same users as on the SharePoint servers, or to change the name of the groups in the config file.

If there is no need to restrict access to the back end of the Document Converter Service, then you may want to consider changing the group names to '*NT AUTHORITY\authenticated users*'.

The *authenticated users* group allows any user with a valid login account to connect. Note that this is not the same as anonymous access.

Keep in mind that SharePoint connects to the Document Conversion service using the Web Application's *application pool* account, not the user's account.

## 2.6.2.2 Concurrency

The Document Converter allows multiple operations to be processed simultaneously. The default settings are sufficient for most situations, but if you are running the service on a standalone server or if you expect the majority of your conversions to be for a single specific format then you may want to tune the concurrency settings.

The following settings can be changed in the config file.

- **serviceThrottling/maxConcurrentCalls:** This setting represents the maximum number of concurrent requests that can be executed across all operations before new requests are queued. The default value is 15.

Please note that this number includes any requests for applying watermarks or Security on documents that are already in PDF format and don't require conversion.

- **MuhimbiDocumentConverters/WordProcessing/maxInstances:** The maximum number of concurrent MS-Word conversion requests before new requests are queued. This value defaults to 2.
- **MuhimbiDocumentConverters/SpreadSheets/maxInstances:** The maximum number of concurrent Excel conversion requests before new requests are queued. This value defaults to 2.

- **MuhimbiDocumentConverters/Vector/maxInstances:** The maximum number of concurrent Visio / Vector conversion requests before new requests are queued. This value defaults to 2.
- **MuhimbiDocumentConverters/CAD/maxInstances:** The maximum number of concurrent AutoCAD conversion requests before new requests are queued. This value defaults to 2.
- **MuhimbiDocumentConverters/TIFF/maxInstances:** This option is not available as it relies on the **MuhimbiDocumentConverters/Image/maxInstances** settings.
- **MuhimbiDocumentConverters/Image/maxInstances:** The maximum number of concurrent image conversion requests (including the separately configured TIFF converter) before new requests are queued. This value defaults to 2.
- **MuhimbiDocumentConverters/MSG/maxInstances:** The maximum number of concurrent MSG & EML (email) conversion requests before new requests are queued. This value defaults to 6.
- **MuhimbiDocumentConverters/Presentations/maxInstances:** Do **not** change this value as PowerPoint does not allow concurrent requests.
- **MuhimbiDocumentConverters/MicrosoftPublisher/maxInstances:** The maximum number of concurrent Microsoft Publisher conversion requests before new requests are queued. This value defaults to 2.
- **MuhimbiDocumentConverters/InfoPath/maxInstances:** Do **not** change this value as InfoPath does not allow concurrent requests.
- **MuhimbiDocumentConverters/HTML/maxInstances:** The maximum number of concurrent HTML conversion requests before new requests are queued. This value defaults to 2.
- **MuhimbiDocumentConverters/Postscript/maxInstances:** The maximum number of concurrent Postscript (.ps) conversion requests before new requests are queued. This value defaults to 2.
- **MuhimbiDocumentConverters/CommandLineConverter/maxInstances:** Maximum number of concurrent requests (of all combined command line converters, if any) before new requests are queued. This value defaults to 2.
- **MuhimbiOCRProcessors/Muhimbi/maxInstances:** The maximum number of concurrent OCR operations before new requests are queued.
- **GDPicture / OCREngine / MaxThreads / PerInstance:** The maximum number of threads each GDPicture OCR operation can use. If the value is not set, it will default to one thread per GDPicture OCR operation.

#### 2.6.2.3 Timeouts and File Size limitations

To prevent users from sending overly complex documents to the conversion service and blocking access for other users for a long amount of time, it is possible to restrict the maximum time a conversion process is allowed to run.

The following settings can be changed to deal with long running conversions:

- **Maximum run duration:** By default, individual conversion requests are not allowed to run for more than 10 minutes. This should be sufficient for even the most complex documents. However, this value can be changed as follows:
  - Change the global value of *MuhimbiOperationTypes* / *operationTypes* / *maxRunDuration* or override this value for individual operation types in the same config section. This allows, for example, OCR to be set to a longer timeout (Defaults to 1 hour).
  - Change the value of *receiveTimeout* to the highest maximum run duration.
- **Maximum file size:** By default the maximum size of a source file is 100MB. This value can be changed using the following settings:
  - *maxBufferSize*: Specify the new maximum file size in bytes.
  - *maxReceivedMessageSize*: Enter the same value here.
  - *maxArrayLength*: Enter the same value here.
  - *maxStringContentLength*: Enter the same value here.

Note that you may also need to change the maximum file size in SharePoint as well as IIS.

#### 2.6.2.4 Logging

The document converter service uses the industry standard *log4net* framework to write logging and trace data to a log file. Out-of-the-box, information is logged to the *Logs\DocumentConverter.log* file stored in the Document Conversion service installation folder. A new file is created for each day and the default logging level is set to 'INFO'.

Warnings and Errors are also written in the Windows Event Log.

You may want to consider changing the following settings:

- **Log file location:** change the path of the log file name in the *appender* element to a location of your preference.
- **Log Level:** By default, only 'INFO' and critical data are logged. To get a better view of what the service is doing, e.g., during a troubleshooting session, you may want to consider switching the <root> log level to DEBUG mode.

More information can be found at  
<https://logging.apache.org/log4net/index.html>.

#### 2.6.2.5 Exception Handling

By default, exceptions that occur in the Conversion Service are passed to the calling client application including a full stack trace. If this is not desired, then set the *includeStackTraceInFaultReason* key in the config file to *false*.

As a result, Exceptions will still be thrown, but the full stack trace will not be included.

#### 2.6.2.6 Regional settings

Some converters display language specific information in the generated documents, e.g., the *From*, *To* and *Subject* labels in an email. By default, the Converter will detect the *display language* of the account the Conversion Service is running under, providing translations are available for that language. This *display language* can be overridden in the config file by setting the value of the *ConversionLocalization* value to the relevant language code, e.g. 'de' for German.

Language *Resource files* must be found in the 'Resources' sub folder of the installation directory, otherwise this setting will have no effect. This setting does not affect date or number formats. At the time of writing this setting only affects the conversion of MSG and EML files.

#### 2.6.2.7 Adding custom converters / changing file extensions

The Conversion Service makes it possible to add new converters as well as change the file extensions managed by each converter. This makes it possible to add new converters that are not shipped with the product and specify which file types it deals with.

This information is stored in the *MuhimbiDocumentConverters* element in the service's config file, for example:

```
<add key="WordProcessing"
      description="Word Processing (e.g. MS-Word, RTF, TXT)"
      fidelity="Full"
      maxInstances="2"
      supportedExtensions="doc,docx,docm,rtf,txt,wps,xml,eml,odt"
      supportedOutputFormats="xps,pdf,doc,docx,rtf,txt,html,mht,xml,odt"
      type="Muhimbi.DocumentConverter.WebService.WordProcessorConverterFull
           Fidelity, Muhimbi.DocumentConverter.WebService, Version=1.0.1.1,
           Culture=neutral, PublicKeyToken=c9db4759c9eaaad12" />
```

Each converter has the following attributes:

- **key:** The name of the converter.  
Do not change this for existing converters unless absolutely needed. The SharePoint front end stores settings for each converter based on this value.
- **description:** An optional, human readable, description of the converter. This is the name displayed for the converter on the administrative screens.
- **fidelity:** The system has the notion of Full Fidelity and High Fidelity converters. SharePoint always uses the Full fidelity converter, but when programming against the Web Services interface it is possible to select a different fidelity.

This makes it possible to have 2 different converters that deal with a file type. For example, MS-Word can be used to convert complex documents (Full Fidelity) whereas a streamlined - high performance - third party component can be used to convert simple files at very high speed (High Fidelity).

- **maxInstances:** The maximum number of concurrent instances allowed. This value is optional.
- **supportedExtensions:** A comma separated list of file extensions that are recognised by the converter.
- **supportedOutputFormats:** A comma separated list of file types that the converter can generate.
- **type:** The full .NET type of the converter.

For details about how to create custom converters see *Appendix - Creating Custom Converters*.

### 2.6.2.8 InfoPath specific switches

To keep InfoPath installation relatively straight forward, the Document Conversion Server makes certain modifications to the files before conversion takes place. In some cases, this is not desirable, for example if data from an external data source is used for display purposes, or if certain embedded code must run before conversion.

If additional control over the InfoPath conversion is required, then consider modifying the following settings.

- Should InfoPath forms marked as *requiring Full Trust* be processed based on the parameters below (e.g. StripDotNETCode) or not ? Generally leave the default value of 'true' unless your XSN file is digitally signed  
`<add key="InfoPathConverterFullFidelity.ProcessFullTrustForms" value="true"/>`
- Remove all .net code from the form before conversion. Defaults to *True*.  
`<add key="InfoPathConverterFullFidelity.StripDotNETCode" value="true"/>`
- Remove all external data connections before conversion. Defaults to *True*.  
`<add key="InfoPathConverterFullFidelity.StripDataObjects" value="true"/>`
- Process any rulesets that may be present. Defaults to *True*.  
`<add key="InfoPathConverterFullFidelity.ProcessRuleSets" value="true"/>`
- Some forms with complex rules such as *get-SharePointServerRootUrl()* require the trust level to be restricted. When this value is set to true *StripDotNETCode* and *StripDataObjects* *\*MUST\** be set to 'true' as well.  
`<add key="InfoPathConverterFullFidelity.RestrictTrustLevel" value="false"/>`

Note that modifying these options makes InfoPath configuration more complex. Do not change these settings unless you have a good reason to do so. For details see *Appendix - Using InfoPath with External Data Sources*.

**Although we are happy to assist, we cannot guarantee that the PDF Converter will operate correctly when the aforementioned settings have been modified. Having said that, many of our customers use the PDF Converter without any problems using custom settings.**



By default, attachments found in InfoPath views are converted to PDF and merged into a single PDF file. This behaviour can be disabled using the following configuration key.

```
<add key="InfoPathConverterFullFidelity.ConvertAttachments" value="true"/>
```

In order to convert InfoPath forms to PDF the converter retrieves the XSN file associated with the InfoPath XML file. By default, it uses the Muhimbi Service's credentials when downloading this XSN file, but in some environments this may not be desirable. For those situations it is possible to override the credentials using the following configuration keys:

```
<add key="InfoPathConverterFullFidelity.XSNUserName" value=""/>
```

```
<add key="InfoPathConverterFullFidelity.XSNPassword" value=""/>
```

```
<add key="InfoPathConverterFullFidelity.XSNDomain" value=""/>
```

For details about the *InfoPathConverterFullFidelity.AutoTrustForms* setting see *Appendix - Using InfoPath with External Data Sources*

InfoPath internally caches files for each request. Over time this may use up a lot of space on the server's hard disk. By default, this cache is cleared by the PDF Converter once an hour, but this duration can be changed using the *InfoPathConverterFullFidelity.XSNCacheClearInterval* setting.

When Internet Explorer 10 was released, InfoPath's internal PDF Export capabilities were damaged (e.g., check boxes are no longer displayed correctly when *ticked*). To mitigate this problem the PDF Converter provides 2 options:

1. Switch to the *High Quality InfoPath Converter*, a completely re-architected InfoPath converter introduced in version 8.0 of the Muhimbi PDF Converter. The PDF Converter's installer provides an option to enable this converter, but it can also be enabled manually by setting the following configuration setting to *true*:

```
<add key="InfoPathConverterFullFidelity.UseNativePrintEngine" value="true"/>
```

This converter requires Ghostscript to be installed, see 2.3.3. For more information see *Appendix – Switching between InfoPath Converters*.

2. If switching to the High Quality InfoPath Converter is not an option then either roll back to Internet Explorer 9 (on the server running the Conversion Service) or set the value of *InfoPathConverterFullFidelity.RenderingMode* in the PDF Converter's configuration file to 'Bitmap'. Although Bitmap based output looks better, the content of these PDFs cannot be indexed or searched.

Providing the High Quality InfoPath Converter is enabled, the following configuration settings can be changed as well:

- **InfoPathConverterFullFidelity.DefaultPaperSize:** The output paper size to use for those InfoPath views where the printer / paper size is not

specified. This does not change the paper size for views where the printer / paper size IS specified.

Leave this value empty to take the value from the default printer or specify a [named format](#) such as 'A4' or 'Letter'. Please note that this value is case sensitive.

- **InfoPathConverterFullFidelity.ForcePaperSize:** Force the paper size regardless of the printer / paper size being present or not in the definition of the InfoPath view.
- **InfoPathConverterFullFidelity.DefaultPageOrientation:** The Page orientation for InfoPath views that don't explicitly specify a printer / paper size. Either 'Portrait' or 'Landscape'. Leave empty to let InfoPath decide.
- **InfoPathConverterFullFidelity.ForcePageOrientation:** Force the page orientation regardless of the printer / paper size being present or not in the definition of the InfoPath view.

#### 2.6.2.9 HTML specific switches

The Muhimbi PDF Converter comes with 3 different HTML to PDF Conversion engines. Legacy ones, based on Internet Explorer and WebKit, and a fully up to date high-fidelity converter based on the Chromium framework. Please keep in mind that the Chromium converter is enabled by default, and that switching back to the legacy converters is possible, but generally discouraged.

HTML is not particularly well suited for printing or PDF conversion, however our software generally generates good results, especially with guidance provided in the following Knowledge Base articles:

- [Converting HTML - Empty page / Authentication problems.](#)
- [Solving formatting issues when converting HTML to PDF.](#)

The conversions service's config file provides a high level of control over the HTML Converter. The key settings – including their default values - are listed below. Please consult the config file's in-line documentation for more details:

#### Generic

- HtmlRenderingEngine: Chromium
- ForceJavaScript: True
- PaperSize: Letter
- PageOrientation: Portrait
- PageMargin: 0.5,0.5,0.5,0.5
- ScaleMode: FitWidth
- URLUsername
- URLPassword
- ConversionDelay: 0
- AuthenticationMode: WebAuthentication
- ErrorReporting: Detail



- SanitizeHyperlinks: True

**WebKit & Chromium**

- EnableWebKitOfflineMode: false
- WebKitViewPortSize: Paper
- MediaType: Print
- WebKitUserAgent

**Webkit specific**

- WebKitProxyURL
- WebKitProxyUsername
- WebKitProxyPassword

**WebKit & IE**

- SplitTextLines: False
- SplitImages: False

**Chromium specific**

- CompressionThreshold: 2048
- RemoveNodes: "iframe,object,embed"

By default, all iFrame, Object and Embed HTML elements are removed automatically when an HTML page is converted into PDF. In case your environment requires those HTML elements and you trust the source then you may remove the required HTML element names from the list.

- UseInstalledChromiumBrowser: Chrome
- ChromiumPath

By default, the installed Chrome application is used for Chromium based HTML to PDF conversions. You can also use your own portable Chromium bundle.

In that case, set *UseInstalledChromiumBrowser* configuration to empty and specify the full path to the folder containing your portable Chromium application in *ChromiumPath*.

If you have downloaded portable Chromium from the Muhimbi website, just extract the files into a folder of your choice and use the above configuration.

**IE specific**

- ClearBrowserCache: True
- IEAlternativeFormRendering: false

Please note that these settings can also be overridden on a request-by-request basis using the *ConverterSpecificSettings* property on the web services interface. For details see the Developer Guide.

## 2.6.2.10 Word processing (MS-Word) specific switches

The following settings are specific to the Word processing based converter and can be specified either globally for all requests using the service's config file or on a *request-by-request* basis using the *ConverterSpecificSettings* property on the web services interface.

- **RevisionsAndCommentsDisplayMode:** Specify the default value for how to view the proposed changes to the document.
  - **FinalShowingMarkup:** Convert the document with all proposed changes highlighted.
  - **Final:** Convert the document with all proposed changes included.
  - **OriginalShowingMarkup:** Convert the original document with all proposed changes highlighted.
  - **Original:** Convert the document before any changes were made.
  - **SimpleMarkup:** Show the final document in simple markup: with revisions incorporated, but with no markup visible.

```
<add key="WordProcessorConverterFullFidelity.RevisionsAndCommentsDisplayMode" value="Final"/>
```

- **RevisionsAndCommentsMarkupMode:** Specify the default value for how to visualise revisions to the document. You can show revisions as balloons in the margins of the document or show them directly within the document itself.
  - **InLine:** Show all revisions Inline
  - **Balloon:** Show all revisions in balloons
  - **Mixed:** Show only comments and formatting in balloons

```
<add key="WordProcessorConverterFullFidelity.RevisionsAndCommentsMarkupMode" value="InLine"/>
```

- **ProcessDocumentTemplate:** Specify if the MS-Word template will need to be stripped out for DOCX files. Leave the default setting (true) unless formatting problems occur.
- **ProcessDOCFiles:** Pre-convert DOC files to DOCX to allow processing using the above mentioned *ProcessDocumentTemplate* setting. Only enable this option when experiencing problems with Document Information Panels. Note that there may be some side effects so talk to support@muhimbi.com before changing this setting.
- **RefreshFull:** When *OpenOptions.RefreshContent* (web service) or *OpenOptions.ForceRefreshContent* (config file) is set to *True*, the PDF Converter refreshes the Table of Content, references and other fields.

For certain field types the CPU usage is unreasonably high, which is why these are ignored by default. By setting *RefreshFull* to *True*, these 'difficult' fields are refreshed as well.

This setting only applies to files of type DOCX, DOTX, DOCM, and DOTM. The fields in question are *PrintDate* and *SaveDate*. This setting is set to *False* by default.

- **RefreshFullLegacyFormats:** This setting is similar to *RefreshFull*, but for legacy document formats (any type except DOCX, DOTX, DOCM, and DOTM). For these file types it is only possible to refresh content in a CPU intensive manner.

Due to the potential large number and important fields involved, not just *PrintDate* and *SaveDate*, this value is set to *True* by default.

#### 2.6.2.11 Spreadsheets (Excel) specific switches

The following settings are specific to the Spreadsheet converter and can be specified either globally for all requests using the service's config file or on a *request-by-request* basis using the *ConverterSpecificSettings* property on the web services interface.

- **FitToPagesWide:** The default value for the number of pages tall the worksheet will be scaled to when it is converted.
- **FitToPagesTall:** The default value for the number of pages wide the worksheet will be scaled to when it is converted.
- **UnhideAllRows & UnhideAllColumns:** Attempt to include hidden rows and columns in the destination document. This may fail when the source document contains protected or locked content. Unless overridden programmatically, this defaults to *not configured*, meaning *False*.
- **AutoTrustDocuments:** Enable this setting to allow XLS files caught by Excel's 'Protected View' facility to be converted. The default is *False*.

#### 2.6.2.12 Presentations (PowerPoint) specific switches

The following settings are specific to the Presentations based converter and can be specified either globally for all requests using the service's config file or on a *request-by-request* basis using the *ConverterSpecificSettings* property on the web services interface.

- **PrintOutputType:** Specify the default value for the part of the presentation to print. Supported values are: *Slides*, *NotesPages*, *Outline*, *OneSlideHandouts*, *TwoSlideHandouts*, *ThreeSlideHandouts*, *FourSlideHandouts*, *SixSlideHandouts*, *NineSlideHandouts*.

```
<add key="PresentationConverterFullFidelity.PrintOutputType" value="Slides"/>
```

- **FrameSlides:** Specify the default value for the border around the slide. Accepts *True* or *False*.

```
<add key="PresentationConverterFullFidelity.FrameSlides" value="True"/>
```

#### 2.6.2.13 AutoCAD specific switches

The AutoCAD converter is highly configurable and allows the following settings to be specified either globally, for all requests using the service's config file, or on a *request-by-request* basis using the *ConverterSpecificSettings* property on the web services interface.

For full details search the service's config file for all keys starting with *CadConverterFullFidelity*.

- **PaperSize:** Specify the paper size of the generated PDF file, either using standardised paper size names such as *A4* or *Letter*, or using custom dimensions in inches or millimetres.
- **PageMargin:** Determine the margin around the page, either as a single uniform value or using a different value for *Left*, *Top*, *Right* and *Bottom*.
- **PaperOrientation:** Automatically detect the drawing's orientation or force it to *Portrait* or *Landscape*.
- **BackgroundColor:** Some AutoCAD drawings have been created using a non-white background colour, in which case you may want to force the background colour in the PDF file using this setting.
- **ForegroundColor:** The PDF Converter supports a number of automatic re-colouring options to make sure that foreground colours don't conflict with background colours or to convert all colours to grey scale. For details see the in-line documentation in the service's config file.
- **Content:** By default all valid layouts found in a DXF or DWG file are converted to PDF. However, you may want to override this setting and only convert specific layouts. This can be particularly useful when converting 3D AutoCAD files.
- **EmptyLayoutDetectionMode:** Specifies how the conversion handles empty or nearly empty layouts.
- **LayoutSortOrder:** Specify the sort order for layout names.
- **ExternalReferences:** Optional path for resolving external references in drawings. Note that all subfolders are automatically searched as well.

#### 2.6.2.14 MSG & EML (email) specific switches

The email converter allows the following settings to be specified either globally for all requests, using the service's config file, or on a *request-by-request* basis using the *ConverterSpecificSettings* property on the web services interface.

For full details search the service's config file for all keys starting with *MSGConverterFullFidelity*.

- **PaperSize:** Specify the paper size of the generated PDF file, either using standardised paper size names such as *A4* or *Letter*, or using custom dimensions in inches or millimetres.
- **PageMargin:** The margin / border around the generated PDF file. One or four {value}{dim} components separated by commas (,) where
  - {value} is a numerical value

- {dim} is the dimension which can be 'mm', 'in.' or 'inches'. (Defaults to inches when nothing is specified)

When multiple values are specified then the sequence is: left, top, right and bottom. For example: "12mm, 24mm, 12mm, 24mm"

- **PageOrientation:** Specifies the page orientation, either 'Portrait' or 'Landscape'.
- **ConvertAttachments:** This config value determines if email attachments will be converted (and merged to the main email), or not.
- **DisplayAttachmentSummary:** Specify whether the attachment filenames are displayed in the email header. This setting works independently to *ConvertAttachments*.
- **AttachmentMergeMode:** Control how to deal with attachments if the source email contains any. There are options to convert attachments to PDF, or attach them in their original format.
- **UnsupportedAttachmentBehaviour:** Control how the system behaves when unsupported attachments are found. Ignore them or raise an error.
- **Include (and exclude) AttachmentTypes:** Control which attachments will be processed, or ignored, based on their file name.
- **MinimumImageAttachmentDimension:** Filter out small images, typically included in a sender's signature.
- **HTMLScaleMode:** Define how images inside HTML based emails are scaled. Unless you have a real good reason to change this value, leave it on the default *FitWidthScaleImagesOnly* setting.
- **PlainTextBodyLineBreaks:** Determine how return characters (new lines) in plain text MSG bodies are handled. By default, Outlook removes certain return characters in plain text emails and the PDF Converter emulates this behaviour. Accepted values are:
  - RetainAll - All carriage returns in the plain text message are retained. Lines may wrap before 80 characters in length.
  - RemoveExtra - Lines that appear to be wrapped due to their length have the return characters removed. Similar to Outlook's implementation.
  - Legacy - A legacy implementation of *RemoveExtra* used prior to version 7.1 of the PDF Converter
- **BestBodyMode:** Determines which email body content (Text / HTML / RTF / RTFHTML) to extract when processing MSG files. Accepted values are:
  - Strict - Implementation of the MS-OXBBODY Best Body algorithm. When RTF content is in sync with the native email content (HTML / Text) the RTF content takes precedence.
  - Default - The default implementation uses the first content found in order of HTML, RTFHTML, RTFTEXT, RTFTEXT and lastly Text.  
NOTE: Always used when converting EML emails.

- **EmailAddressDisplayMode:** Determines how email addresses (except the *From address or Calendar Organizer*) are displayed. Where multiple types of email addresses are found (SMTP, Exchange), the SMTP address is favoured. Accepted values are:
  - Name - Display the email name only, omitting any address details. If the name is not found the email address is displayed.
  - NameAndAddress - Display both the name and email address.
  - Address - Display the email address only, omitting any name details. If the email address is not found, the name is displayed.
  - NameAndSMTPAddress - Display the email recipient name as well as their email address, but only if an SMTP address is found.
- **FromEmailAddressDisplayMode:** As per EmailAddressDisplayMode except only applicable to the *From addresses and Calendar Organizer*.
- **BreakOnUnsupportedAttachment:** When an unsupported attachment is found, the conversion is halted and an error message is returned.
- **BreakOnUnsupportedEmbeddedObject:** When an unsupported embedded object is found, e.g. an embedded OLE object where no file type identification is provided, the conversion is halted and an error message is returned.
- **EmbeddedObjectDisplayMode:** Determines how embedded objects are displayed. NOTE: Where the embedded object is displayed as an icon, use EmbeddedObjectIconDisplayMode. Accepted values are:
  - InlineNoScale - The embedded object is displayed as it appears in Outlook. If the object is larger than the current page size, it will be cropped.
  - InlineFitWidth - The embedded object is scaled so that its (width) content fits on the page.
  - Disabled - The embedded object is hidden from any output.
- **EmbeddedObjectIconDisplayMode:** Determines how embedded objects are displayed where they are stored as an icon. Accepted values are:
  - IconOnly - The embedded object icon is displayed as it appears in Outlook.
  - Disabled - The embedded object icon is hidden from any output.
- **SentDateMissingDisplayMode:** Control what is displayed when the *sent date* of an email is not found (ie, the email was never sent). Accepted values are:
  - ModifiedDate - Displays the modified date of the MSG file itself (not supported in EML)
  - Any Text - Displays the text as entered.



#### 2.6.2.15 Alternative Office conversion engine setting

The GdPicture engine is a high performance, multi-threaded conversion and OCR engine. It can process Office files without the requirement for Microsoft Office components. It is also capable of converting some file types that are not converted by other converters.

```
<add key="GdPicture"
  description="GdPicture Converter"
  fidelity="Full"
  maxInstances="2"
  supportedExtensions="docx,docm,dotx,doc,dot,rtf,htm,html,mht,mhtml,xml,tif,xls,
    xlsx,xlsm, csv,ppt,pptx,pptm,ps,msg,eml,dxf,cur,wsq,gif,bmp,
    cut,dds,dib,dicom,exif,exr,fax,g3,hdr,heif,heic,iff,ico,j2k,
    j2c,webp, jb2,jbig2,jif,jfif,jng,jp2,jpeg,jpg,jpe,koa,lbm,
    mng,pbm,pcd,pct,pict,pic,pcx,pdf,pfm,pgm,psd,png,pnm,ppm,ras,
    raw,rle,sgi,svg,tga,targa,tiff,tif,wbmp,wap,wbm,xbm,xpm"
  supportedOutputFormats="pdf"
  type="Muhimbi.DocumentConverter.WebService.GdPictureConverter,
    Muhimbi.DocumentConverter.WebService, Version=1.0.1.1, Culture=neutral,
    PublicKeyToken=c9db4759c9eaad12" />
```

If certain Microsoft Office components are not installed on the server, this engine can be configured to process those file types: simply disable the converter which uses Microsoft Office for conversion.

You can disable a specific converter by commenting out or deleting its configuration.

The following example disables the *SpreadSheets* converter which would require Microsoft Excel to work. In this case the *GdPicture Converter* will handle the conversion of Excel file types.

```
<!-- <add key="SpreadSheets"
  description="Spreadsheets (e.g. Excel, CSV)"
  fidelity="Full"
  maxInstances="2"
  supportedExtensions="xls,xlsx,xlsm,xlsb,xlt,xltx,xml, csv,dif,ods,ots,mht,html,htm"
  supportedOutputFormats="xps,pdf,xls,xlsx, csv,html,mht,xml,ods"
  type="Muhimbi.DocumentConverter.WebService.SpreadSheetConverterFullFidelity,
    Muhimbi.DocumentConverter.WebService, Version=1.0.1.1, Culture=neutral,
    PublicKeyToken=c9db4759c9eaad12" /> -->
```

#### 2.6.2.16 Switches used for overriding settings

The following settings can be changed to allow any client side settings to be globally overridden. *Unless you have a specific reason to change them, leave these settings unchanged.*

- **Merging.ForceBreakOnError:** Override the *BreakOnError* value during merge operations. Leave empty to use the setting specified in the web service call (MergeSettings). Specify 'True' to fail the entire operation when an error occurs. Use 'False' to continue and skip any problematic files.
- **Merging.ForceOmitErrorPages:** Override the *OmitErrorPages* value during merge operations. Leave empty to use the setting specified in the web service call (MergeSettings). Specify 'False' to insert pages into the PDF indicating that an error has occurred while converting a specific document.
- **Merging.StripDigitalSignatures:** When merging PDF files (or InfoPath / MSG attachments) that contain digital signatures then please set this value to 'true' to remove all digital signatures. Signed documents cannot be merged.

- **Merging.DefaultDocumentStartPage:** Default value for the *DocumentStartPage* value when merging documents. This value is used when 'Default' is specified in the MergeSettings object. The available options are:
  - Next - When merging, start each document on the next page.
  - Odd - When merging, start each document on an odd page (usually the right hand page when printing double sided).
  - Even - When merging, start each document on the next even page.
- **OpenOptions.ForceAllowMacros:** Override the *AllowMacros* value during conversion. Leave empty to use the setting specified in the web service call (in OpenOptions). Accepted values are members of the *Muhimbi.DocumentConverter.WebService.Data.MacroSecurityOption* enumeration or an empty string.
  - None - Don't allow any macros to run
  - SignedOnly - Only allow macros to run with a valid digital signature
  - All - Allow all macros, regardless of their origin and digital signature. This is not recommended as it may compromise the security of the server.
- **OpenOptions.ForceRefreshContent:** Override the *RefreshContent* value during conversion. Leave empty to use the setting specified in the web service call (in OpenOptions). Accepted values are 'true', 'false' or empty string.
- **ConversionSettings.ForceQuality:** Override the *Quality* value during conversion. Leave empty to use the setting specified in the web service call (in ConversionSettings). Accepted values are members of the *Muhimbi.DocumentConverter.WebService.Data.ConversionQuality* enumeration or an empty string.
  - OptimizeForPrint - Optimise the file size and resolution for print purposes.
  - OptimizeForOnScreen - Optimise the file size and resolution for use on a computer screen
- **ConversionSettings.ForceRange:** Override the *Range* value during conversion. Leave empty to use the setting specified in the web service call (in ConversionSettings). Accepted values are members of the *Muhimbi.DocumentConverter.WebService.Data.ConversionRange* enumeration or an empty string.
  - VisibleDocuments - Skips, in case of Excel and PowerPoint, any hidden tabs or slides.
  - AllDocuments - Export all tabs or slides in a workspace.
  - ActiveDocuments - Exports, in case of Excel, the selected tabs.
- **ConversionSettings.ForceGenerateBookmarks:** Override the *GenerateBookmarks* value during conversion. Leave empty to use the setting specified in the web service call (in ConversionSettings). Accepted values are members of the *Muhimbi.DocumentConverter.WebService.Data.BookmarkGenerationOption* enumeration or an empty string.
  - Disabled - Don't generate any bookmarks.
  - Automatic - Based on headings, if applicable.



- Custom - Based on bookmarks defined in the document, e.g. MS-Word Bookmarks, if applicable.
- **ConversionSettings.ForcePDFProfile:** Override the PDFProfile value during conversion. Leave empty to use the setting specified in the web service call (in ConversionSettings). Accepted values are members of the *Muhimbi.DocumentConverter.WebService.Data.PDFProfile* enumeration or an empty string.
  - PDF\_1\_5 - Use PDF Version 1.5
  - PDF\_A1B - Use the PDF/A standard for long term archiving

### 2.6.2.17 PDF & Security Settings

The default PDF Security and Encryption settings have been designed to be compatible with the widest possible range of PDF Readers. However, this means that security has been 'dumbed down' a bit. If all your users are on relatively recent versions of PDF Readers then you may want to tighten up the security settings.

- **PDF.EncryptionKeySize:** Set the security key size for encrypting PDF files. Possible values are 40, 128 and 256. Please note that 256 Bit is not supported on versions of Acrobat older than version 9 and many other PDF readers.
- **PDF.EncryptionAlgorithm:** Set the security algorithm, either *RC4* or *AES*. Although cryptographically stronger, be careful when using AES as only Acrobat Reader 7 or newer can open AES encrypted files.
- **PostProcessSecuredFiles:** Define whether PDF files that are already secured will be post processed by the system. Post processing can include watermarking and applying security settings.
- **PostProcessPDF1.5:** For legacy reasons *PDFProfile.PDF\_1\_5* is treated the same as the *PDFProfile.Default* PDF output type. As a result it is not guaranteed to be 100% 1.5 compliant. Enable this setting to make sure the file is post processed and forced to be 1.5 compliant. (Requires Pro license)
- **ConvertAttachments:** Convert and merge files that are attached to the PDF. This setting is disabled by default.
- **ConvertAttachmentMode:** What to do with attachments after conversion (Only used when *PDF.ConvertAttachments* is enabled):
  - **RemoveAll:** Convert and delete all files attached to the PDF, even file formats not supported by the converter. This is the default setting.
  - **RemoveSupported:** Convert and delete all files supported by the PDF converter, but leave unsupported files attached.
- **AttachmentMergeMode:** Control how to deal with attachments if the source PDF contains any. There are options to convert attachments to PDF or attach them in their original format.
- **UnsupportedAttachmentBehaviour:** Control how the system behaves when unsupported attachments are found. Ignore them, raise an error or attach them in their original format.

- **Include (and exclude) AttachmentTypes:** Control which attachments will be processed, or ignored, based on their file name.
- **NamedDestinationProcessingMode:** How to deal with the automatic generation of 'Named Destinations' using the PDF's Bookmarks. The default value is 'None'.
  - **None:** Do not change the named destinations defined in the document.
  - **ClearAll:** Remove all named destinations. (All bookmarks pointing to existing named destinations will be fixed up automatically)
  - **Merge:** Keep existing named destinations and add new ones based on the PDF's bookmarks.
  - **Replace:** Remove all existing named destinations and add new ones based on the PDF's bookmarks.
- **IgnorePortfolioCoverSheet:** When merging multiple files embedded in a PDF Portfolio file, include the portfolio's cover sheet or not.
- **Watermark.DisableIncrementalUpdate:** When watermarking PDF documents with large number of pages, using incremental update can increase the file size considerably. Use this setting to disable it. Processing, generally, takes longer when incremental update is disabled.

## 2.7 Hardening the Conversion Service

Some environments have particularly strict security requirements and require the server running the conversion service to be 'hardened' from a security perspective. For detailed guidance on this topic see the Knowledge Base article at <https://www.muhimbi.com/knowledge-base/hardening-securing-the-server-that-runs-the-conversion-service/>.

## 2.8 Un-installation

Both parts of the solution, the Conversion Service as well as the SharePoint front end, can be uninstalled using Windows' *Add or Remove programs* facility (appwiz.cpl). Even though the SharePoint front-end may have been rolled out to multiple servers, the uninstaller is only present on the server where the original installation was carried out.

If, for whatever reason, the SharePoint front-end must be uninstalled by hand then please follow the steps outlined below:

1. Open Central Administration and navigate to *Solution Management*.
  - a. **SharePoint 2007:** *Operations > Solution Management*.
  - b. **SharePoint 2010 (and later):** *Central Administration > System Settings > Manage Farm Solutions*.
2. For each of the Muhimbi PDF Conversion related WSPs follow these steps:
  - a. Click on the Solution to retract, e.g. 'Muhimbi.pdfconverter.wsp'.
  - b. Click the '*Retract Solution*' button.
  - c. Accept the default settings and click OK.
  - d. Depending on the size of the web farm this may take a few minutes. Refresh the '*Solution Management*' page until the status is set to 'Not Deployed'
  - e. Click on the solution name again.
  - f. Click the '*Remove Solution*' button to completely remove it from the farm.

## 2.9 Upgrading from a previous version

*Although the PDF Converter is a friendly and well tested application, its underpinnings are quite complex. It is rare for the Muhimbi support desk to receive any complaints about the upgrade process, yet we don't recommend upgrading unless there is a specific feature in a new version that you need. We recommend following industry best practices by deploying new versions in Development and Test environments, and only deploy to Production after thorough testing.*

Upgrading the software from a previous version is simple and straight forward. However, there are some things to take into account.

1. **Breaking changes:** It is rare that the software breaks something between releases, but sometimes a fundamental change is made (E.g. a brand new HTML converter) that may have side effects on certain customer-specific edge cases. Before upgrading, please consult [this Knowledge Base article](#).
2. **Service's config file:** The Conversion Service uses a standard .config file to control the default behaviour of the product (see 2.6.2 *Fine-tuning the*

*Document Conversion service*). Please note that any changes to this file are not maintained during an upgrade. You will need to manually re-apply any changes that may have been made since the previous installation. We advise that you make a back up of this file before upgrading.

3. **Settings stored in SharePoint:** During the day to day operation of the software all settings are stored inside SharePoint. These settings are maintained during the upgrade process and do not need to be re-applied.
4. **Status of SharePoint Features:** SharePoint remembers correctly which SharePoint Features are enabled on a site collection. However, during the upgrade it does not remember the status of Web Application scoped Features. After upgrading the front end, the default Features will be enabled automatically by the product's installation process. However, any Features that were previously manually enabled, e.g. integration with Nintex Workflow, will need to be re-enabled. For an overview of which Features ship with the product, and their scope, see *SharePoint Feature Activation / Deactivation*.
5. **Nintex Workflow integration:** Due to the fact that Nintex Workflow caches some details, please carry out an *iisreset* on all front end servers after uninstalling the Muhimbi front end as part of the upgrade process.
6. **K2 blackpearl integration:** When using the PDF Converter in combination with blackpearl, please follow the K2 specific upgrade instructions in *Appendix – Deploying K2 Integration facilities*.

Aside from the points and actions described above, the upgrade process is as follows:

1. Uninstall the software as described in 2.8 *Un-installation*.
2. Install the new version as described in 2.4 *Installation steps*.
3. Make any of the post installation changes described in the introduction of this section, e.g. enable the various Web Application scoped SharePoint Features.

## **2.10 Adding OCR languages for GDPicture OCR engine**

Out of the box, PDF Converter Services is supplied with an extensive range of languages for the GDPicture OCR engine:

The language files can be found in <installation location>\gdpicturewrapper\ocr

If additional languages become available, improved language handling or you require specific languages please contact support@muhimbi.com.

## 3 Troubleshooting & Other common tasks

This section provides some guidance related to troubleshooting problems.

If you still have questions after reading this chapter then please visit our support desk at [support.muhimbi.com](http://support.muhimbi.com) or contact our support team at [support@muhimbi.com](mailto:support@muhimbi.com).

### 3.1 Windows Event Log

Unless you have decided to disable certain logging levels in *Central Administration > Operations > Logging and Reporting > Diagnostic logging*, (*Monitoring > Configure Diagnostic Logging* in SP 2010 and later) the following entries may be written to the event log:

1. **Warnings:** If you are running an evaluation copy of the software, or your license has expired then this is reported as a warning message in the Application Event Log.
2. **Errors:** Although the software makes an attempt to catch any error, and present the user with a friendly message, the actual errors are still written to the event log. Errors are usually caused by corrupt documents or a Site Collection running out of space.

Note that all event entries written by Muhimbi's products use the Windows *SharePoint Services 3* Event Source (*SharePoint Foundation* event source in SharePoint 2010 and later) and can be filtered down by Event ID, which is always 41734.

### 3.2 SharePoint Trace Log

Unless you have decided to disable certain logging levels in *Central Administration > Operations > Logging and Reporting > Diagnostic logging* (*Monitoring > Configure Diagnostic Logging* in SP 2010 and later), the following entries may be written to the SharePoint trace log:

1. All Warnings and errors that are written to the Windows Event Log are also written to the SharePoint Trace log.
2. An entry is written whenever the software is installed or uninstalled.
3. An entry is written whenever the PDF Converter feature is activated.
4. An entry is written whenever a document is converted. This entry contains the location of both the source and the destination files.
5. An entry is written whenever a document is skipped because its file format is not supported.

Note that the location of the log files is defined in the *Diagnostic Logging* screen in Central Administration.

### 3.3 Document Converter Trace Log

The Document Converter Service maintains a detailed trace log named *Logs\DocumentConverter.log* in the directory the service has been installed in.

For details on how to change the log settings see section 2.6.2 *Fine-tuning the Document Conversion service*.

### 3.4 Common issues & Errors

#### 3.4.1 Your account is not allowed to deploy SharePoint Solutions

Before attempting to deploy the solution, please make sure your account is a Farm Administrator and your account has *db\_owner* rights on the Admin content database. This is a common requirement for being able to deploy SharePoint Solutions and is not specific to Muhimbi's products.

Consider using the [Add-SPShellAdmin](#) PowerShell command to apply the appropriate privileges.

#### 3.4.2 Errors on newly added servers

The software may not work on any new servers that have been added to the SharePoint farm after the initial deployment of the PDF Converter.

This is a known issue with SharePoint. For details see section 'Unknown Error' or 'resource object not found'.

#### 3.4.3 An evaluation message is displayed in the UI and converted documents

When an *evaluation* message is displayed on each screen and in each converted document then something may be wrong with your license. This may be caused by:

1. No license is present at all.  
*Solution:* Buy a license at [www.muhimbi.com](http://www.muhimbi.com)
2. Your support license has expired and you have installed a copy of the software that was released after the support license expiration date.  
*Solution:* Renew your license or install a copy of the software that was released while your license was valid.
3. Your (temporary) software license has expired. If you have placed your order via the *Purchase Order* payment type then you may have been issued with a temporary license while we wait for the invoice to be paid.  
*Solution:* Please check with your billing department to see if your invoice has been paid and download your full license from the My Account area on the Muhimbi Website.
4. The installed license is for a different Muhimbi Product.  
*Solution:* Please check the installed license is for the correct product.

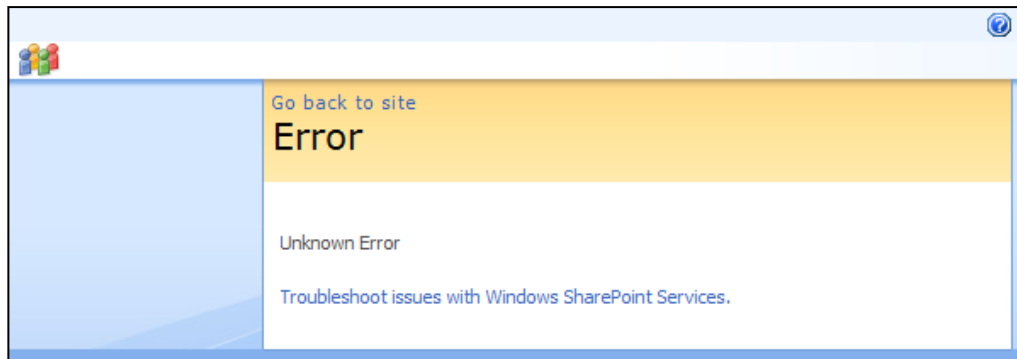
5. The contents of the license file have been tempered with, either manually or because it has been opened in an application that modifies the content.  
*Solution: Please download the license again from the My Account area on the Muhimbi Website.*
6. The evaluation message has been removed from the user interface but is still present in the converted documents.  
*Solution: The license has not been installed properly in the Document Conversion Service's directory. For details see section Installing the License .*

For additional details see *Appendix - Licensing* and section *Installing the License* as well as [this Knowledge Base article](#).



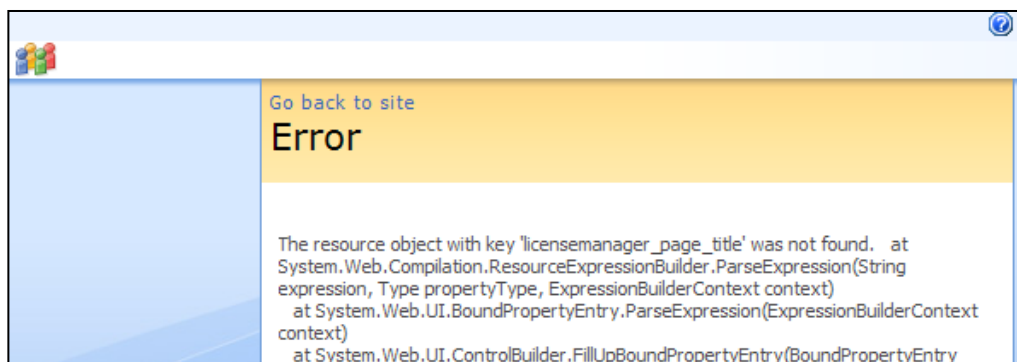
### 3.4.4 'Unknown Error' or 'resource object not found'

If you receive an 'Unknown Error', or the equivalent in your local language, then there may have been a problem with the distribution of your language specific resource files.



This error is not logged to the event log as this is a SharePoint error, which is triggered before our software is started. To get more detail about the error, temporarily change the 'CallStack' attribute in the 'SafeMode' element in the web.config to 'True'.

If a message similar to the following is displayed after refreshing the page then you need to force SharePoint to redistribute the resource files.



This can be done by issuing the following command<sup>9</sup> on each server exhibiting the problem:

```
stsadm -o copyappbincontent
```

<sup>9</sup> STSADM is located at %CommonProgramFiles%\Microsoft Shared\Web Server Extensions\12\BIN (or ..14\BIN in SP2010, ..15\BIN in SP2013 etc)

In some cases running the command mentioned previously does not resolve the problem. As a last resort copy the resource files manually on all Web Front End Servers from

```
C:\Program Files\Common Files\Microsoft Shared\Web Server  
Extensions\12\CONFIG\Resources\MuhimbiPDFConverter.*
```

to

```
C:\inetpub\wwwroot\wss\VirtualDirectories\<webapplication>\App_GlobalResources
```

#### **3.4.5 Documents using non standard fonts (e.g. Japanese) are not converted properly / The fonts in the destination document are not correct**

If the fonts in the converted document are not displayed properly then please make sure that the correct fonts are installed on the server hosting the Document Conversion Service, **restart the server after installing new fonts**.

For example, if Japanese characters are not displayed properly then make sure the Japanese language pack for Windows Server is installed.

If a font cannot be found then the system will attempt to find an alternative, but similar, font. If an alternative cannot be found then the system will use the Times New Roman font.

When using the optional *PDF/A post processing facility* then all used fonts are automatically embedded in the PDF document. If fonts are deployed to the server after Ghostscript was installed then please execute the following command from the Ghostscript bin directory.

```
gswin32c -q -dBATCH -sFONTDIR=c:/windows/fonts -  
sCIDFMAP=../lib/cidfmap ../lib/mkcidfm.ps
```

Please replace *gswin32c* with *gswin64c* when using the 64 bit version of Ghostscript. If the Windows directory is located elsewhere then change the *sFONTDIR*, please use forward slashes, not backslashes.

For more details about how the optional Ghostscript installation is used for PDF/A post processing see *Appendix - Post processing PDF output to PDF/A*.

AutoCAD fonts can be placed in the *SHXFonts* folder under the Conversion Service's installation folder.

#### **3.4.6 Error messages related to printer drivers or the printer spooler are logged**

The Excel and InfoPath converters require the *Printer Spooler* service to be started. The installer used by the Document Conversion Service attempts to start the Printer Spooler service automatically, but if the service is subsequently disabled then you may receive an error.

These converters also require at least one printer driver to be installed. Although in general it doesn't matter which driver is installed, some drivers such as VMWare's Virtual Printer or the OneNote printer will cause problems. Windows Server 2003 R2 and Windows Server 2008 automatically install the XPS driver, it is recommended to make this the default printer.

#### **3.4.7 Problems converting InfoPath forms without a shared XSN file**

If you intend to convert InfoPath forms that don't rely on a shared XSN template stored on a file share or in SharePoint then the XSN file must be registered on the Document Conversion Server using RegForm.exe.

The RegForm application can be found in C:\Program Files\Microsoft Office\Office12. For details see the second half of the following article:

[https://learn.microsoft.com/en-us/previous-versions/office/developer/office-2007/bb251025\(v=office.12\)](https://learn.microsoft.com/en-us/previous-versions/office/developer/office-2007/bb251025(v=office.12))

#### **3.4.8 The 'Convert to PDF' context menu is displayed twice**

If a user interface element associated with the Muhimbi PDF Converter for SharePoint is displayed twice then this is most likely caused by both the *Web Application* and *Site Collection* versions of the same Feature being active at the same time.

For full detail see section *SharePoint Feature Activation / Deactivation* as well as [this Knowledge Base article](#), but as a general rule enable either the Web Application Level Feature or the Site Collection Level Feature. Don't enable both.

#### **3.4.9 InfoPath forms using Ink controls fail to convert**

When using Ink Controls, for example to capture signatures on InfoPath forms, then please make sure the Ink controls are installed on the machine(s) that run the Muhimbi Conversion Service. For example, in Windows Server 2008 these controls are installed as part of the "Ink & Handwriting features", part of the "Desktop Experience" Windows Feature.

#### **3.4.10 Error 403 (Forbidden) when converting InfoPath forms**

When InfoPath conversion fails and the error message in the Windows Application Event Log refers to "*The remote server returned an error: (403) Forbidden*" then this may be caused by the authentication type specified on the Web Application. If, for example, Forms Based Authentication is enabled, but NTLM authentication is not configured on the same Web Application then the Muhimbi Conversion Service will not be able to download the XSN file.

The problem can be solved by adding NTLM authentication to the Web Application.

#### **3.4.11 InfoPath files are converted using an old version of the XSN template**

Although rare, InfoPath sometimes re-uses an old XSN file when carrying out a conversion. Running the typical `InfoPath /cache ClearAll` command will not work as XSN files are stored in a different location when running as a service.

Please clear all *FormCache* folders manually from the following location:

64bit: %windir%\SysWOW64\config\systemprofile\AppData\Local\Microsoft\InfoPath

32bit: %windir%\System32\config\systemprofile\AppData\Local\Microsoft\InfoPath

#### **3.4.12 Nintex Workflow Activities are not working as expected after upgrading**

If you encounter any Nintex Workflow related issues after upgrading to a new version of the Muhimbi PDF Converter for SharePoint then make sure the client side browser cache is cleared. If problems persist then uninstall the Muhimbi SharePoint front end, carry out an IISRESET on all front end servers and then install the Muhimbi SharePoint front end again. This is related to caching inside Nintex Workflow.

Please remember to [activate the Muhimbi Nintex Workflow actions](#) on the relevant Web Applications.

#### **3.4.13 Event Manager error after uninstallation**

When the Muhimbi PDF Converter for SharePoint is uninstalled from a SharePoint server, and a new version is not installed afterwards, then you may occasionally see the following message in the Windows Application Event log.

*Event manager error: Could not load file or assembly 'Muhimbi.SharePoint.DocumentConverter.PDF, Version=1.0.1.1, Culture=neutral, PublicKeyToken=c9db4759c9eaad12' or one of its dependencies. The system cannot find the file specified.*

This message will not cause any side effects and will only be logged after configuring the system to use the automatic watermarking facilities. Contact Muhimbi's support desk for instructions on how to prevent this message from being logged.

#### **3.4.14 Files uploaded via Windows Explorer do not trigger 'Insert' watermarks**

When using the watermarking facilities to automatically apply a watermark when a new file is uploaded then the appropriate event is not triggered by SharePoint 2010 when uploading the file using Windows File Explorer. This is related to a bug in SharePoint, the *Update* event is triggered instead.

As a workaround either make sure all files are uploaded using the web browser or apply watermarks to new files using a SharePoint Designer Workflow, Visual Studio Workflow or Nintex Workflow.

#### **3.4.15 'Watermark on Open' does not show watermarks**

If the *Watermark on Open* facility is used and watermarks do not show up when opening a PDF file then please check the following:

1. If the PDF File was previously opened by a user before this facility was enabled, the browser may cache the previous version of the document. To solve this problem clear the browser cache.

2. The Web Application scoped Feature named '*Muhimbi PDF Converter - Automatic Watermarking Processor*' must be enabled. For details on the various SharePoint Features provided by the product see *SharePoint Feature Activation / Deactivation*.
3. If the watermark is set to 'print only' then it is only visible when the PDF is printed.

For further details see [this Knowledge Base article](#).

#### 3.4.16 Changing the default bookmark and sort fields when merging files

The PDF Converter ships with a powerful facility that allows multiple files to be merged together. It even allows fields to be selected to sort files by and use as PDF bookmarks. However, the default options (sort by *Modified*, use *Title* as PDF bookmark) may not be suitable for your purposes.

These default options can be modified as follows:

1. The file elements.xml is located in a folder structure dependent upon the version of SharePoint installed on the server:

SharePoint Version	Version number
SharePoint 2007	12
SharePoint 2010	14
SharePoint 2013	15
SharePoint 2016+	16

```
%CommonProgramFiles%\Microsoft Shared\Web Server  
Extensions\<version  
number>\TEMPLATE\FEATURES\Muhimbi.PDFConverter\elements.x  
ml
```

2. Search for all instances of the following values and change where needed:
  - **BookmarkField:** Enter the internal name of the field to use as the PDF Bookmark.
  - **SortField:** Enter the internal name of the field to sort on.
  - **SortOrder:** Specify either *ascending* or *descending*.

Please repeat this change on all SharePoint Front End servers and issue an *iisreset* on each server after making the change.

Note that these modifications do not survive an upgrade of Muhimbi's front end software, so please keep track of your changes.

For details about using this merging facility see the User Guide.

## Appendix - Using InfoPath with External Data Sources

*Please note that this appendix only applies to environments that have 'external data sources' enabled. Enabling data sources is a manual action, default deployments of the Muhimbi PDF Converter never ship with this option enabled. For more details see the 'InfoPath specific switches' segment in section 2.6.2.8 - InfoPath specific switches.*

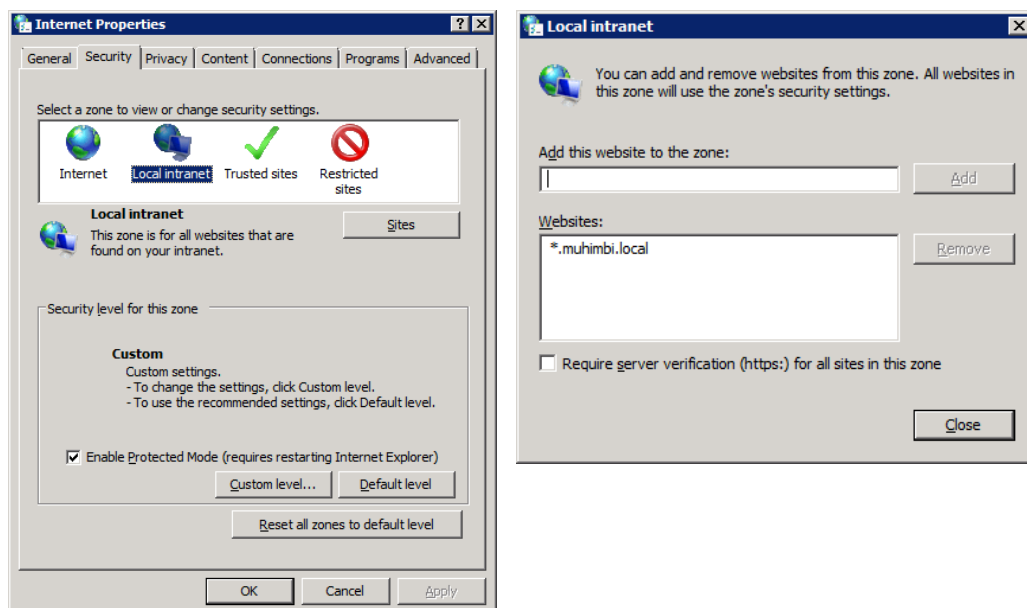
*Although we are happy to assist, we do not officially support conversions that run with 'StripDotNETCode', 'StripDataObjects' or 'ProcessRuleSets' set to 'false'. Having said that, many of our customers use the PDF Converter without any problems using these custom settings.*

### Details for InfoPath 2007

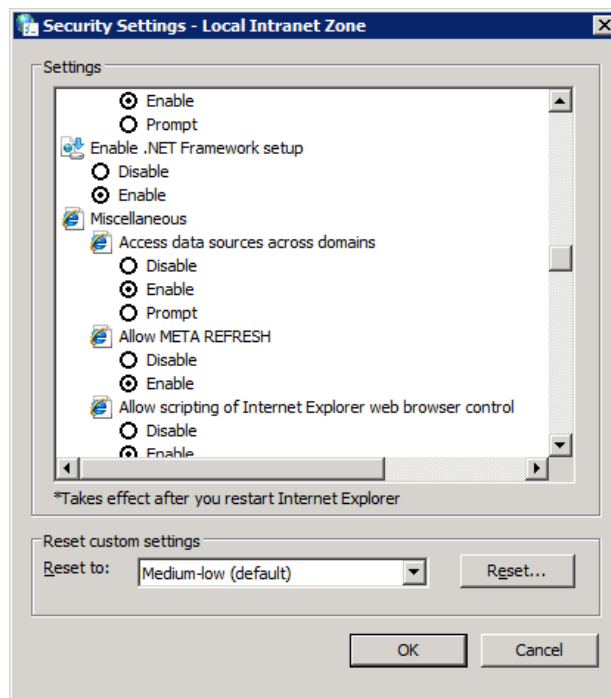
When an InfoPath document containing external connections, e.g. a dropdown list with the contents of a SharePoint list, fails to convert then this may be caused by the location of the XSN file not being trusted or the *access data sources across domains* setting not being enabled for the trusted site.

Ideally this configuration change should be made by a Domain Administrator using a group policy. However, the change can be made manually as well using the steps outlined below:

1. Log in using the account the *Muhimbi Document Converter Service* is running under.
2. Open *Internet Options* either from Internet Explorer or the Control Panel.
3. Verify the site that hosts the XSN file is recognised as a *Local Intranet* site by selecting *Local Intranet*, clicking the *Sites* button followed by the *Advanced* button. You may need to uninstall / disable *Internet Explorer Enhanced Security* on your server in order for this to work.

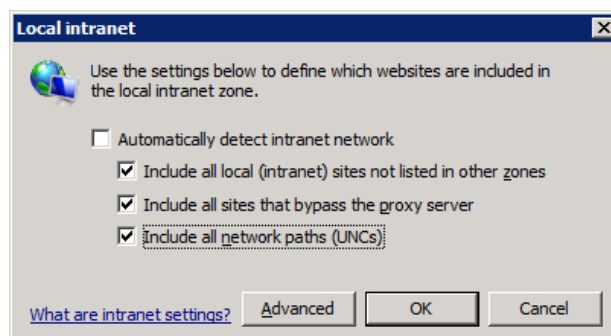


4. With *Local Intranet* selected, click the *Custom Level* button and verify that *Access data sources across domains* is set to *Enable*.



5. In the same screen navigate to the '*User Authentication*' section and select '*Automatic Logon with current user name and password*'.

If the previous steps fail to resolve the problem then make sure automatic detection of the Intranet network is disabled and the individual options (as per the screenshot below are enabled).



This screen can be opened from *Internet Options / Security / Local Intranet / Sites*. Note that in Internet Explorer 6 the *Automatically detect intranet network* option is not present, but the individual options are.

If conversions of InfoPath documents don't work consistently then flush the local Form Template Cache by logging in as the service account and issuing the following command from Windows' Start / Run menu:

```
Infopath /cache clearall
```



## Details for InfoPath 2010 & 2013

In InfoPath 2010 Microsoft has made changes to the way forms are trusted. As a result the instructions for InfoPath 2010 are different from those for InfoPath 2007.

### 3.4.17 Digitally signing forms

The most reliable way to convert forms *as-is*, with full support for Data Connections, Rule Sets and custom code, is to digitally sign the XSN file.

For details about how to do this see the following resources.

- <https://learn.microsoft.com/en-us/office/client-developer/infopath/form-templates/understanding-fully-trusted-forms>
- <https://learn.microsoft.com/en-us/office/client-developer/infopath/form-templates/additional-infopath-form-security-concepts>
- <https://learn.microsoft.com/en-us/office/client-developer/infopath/form-templates/how-to-deploy-infopath-form-templates-with-code>

Please make sure to use a digital certificate that uses an *authority* that is trusted by the server that runs the Muhimbi Conversion Service. Temporary test certificates created on a development machine will not work when used on other machines.

When using digitally signed forms AND you wish to access external data connections and / or custom code during conversion then please set the *InfoPathConverterFullFidelity.ProcessFullTrustForms* key in the Muhimbi Service's config file to *false*.

### 3.4.18 Using Muhimbi's 'AutoTrustForms' feature

Starting with version 5.1 of the Muhimbi PDF Converter it is possible to convert InfoPath forms that use either the *Domain* or *Automatic* trust levels, with full support for External Data Sources, Rule Sets and running custom code.

To prevent compatibility problems with any previous versions of the software this feature is disabled by default. In order to enable it set the following value to *true* in the Muhimbi Service's config file and restart the service.

```
<add key="InfoPathConverterFullFidelity.AutoTrustForms" value="false"/>
```

Just enabling this feature by itself will achieve nothing, the idea is to disable at least one of the following options as well:

```
<add key="InfoPathConverterFullFidelity.StripDotNETCode" value="true"/>
```

```
<add key="InfoPathConverterFullFidelity.StripDataObjects" value="true"/>
```

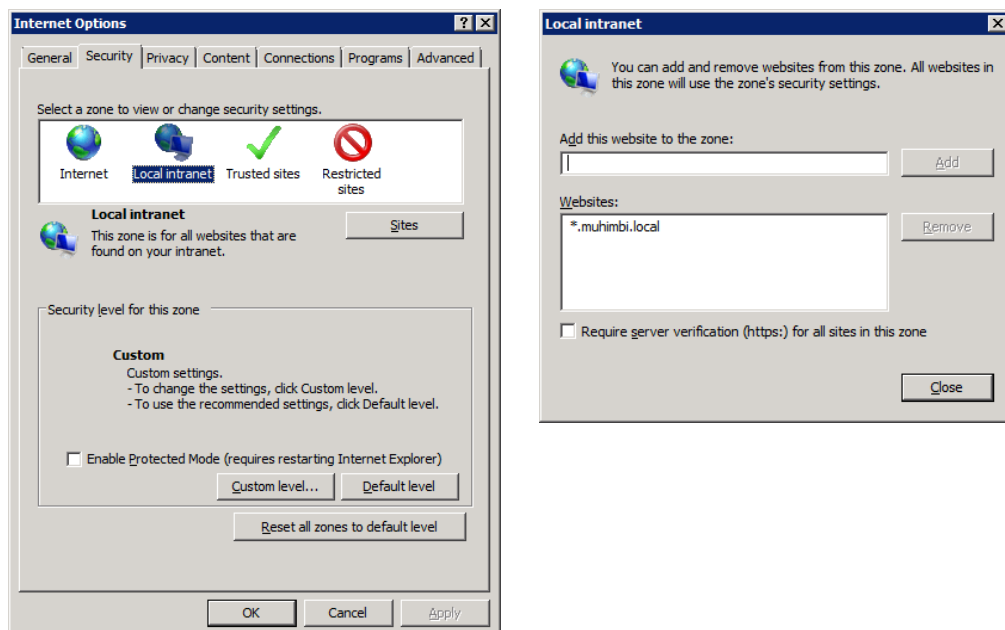
```
<add key="InfoPathConverterFullFidelity.ProcessRuleSets" value="true"/>
```

For more details about these settings as well as editing the service's config file see 2.6.2 *Fine-tuning the Document Conversion service*.

In order to use this functionality, file sharing must be enabled on the server that runs the Muhimbi Service and the default *Administrative Drive Shares* (C\$, D\$ etc) must be available as well for the drive that holds the service account's %TEMP% folder.

When the *AutoTrustForms* facility is used to connect to external systems, e.g. a web service on your SharePoint server, then please make sure the server name is recognised as a *local intranet* system by adding the server name / entire domain to the list of *local intranet* sites. This can be done either manually or, even better, using a group policy. The manual steps are as follows:

1. Log in to the desktop using the account the Muhimbi Conversion Service runs under.
2. Start Internet Explorer and navigate to Tools / Internet Options / Security.
3. Select 'Local Intranet' and click the 'Default Level' button.
4. Click the 'Sites' button followed by 'Advanced'.
5. Add the server that is being connected to to the list.



Similar to the *Details for InfoPath 2007* section above, click the *Custom Level* button and make sure that *User Authentication* is set to *Automatic Logon with current user name and password* and that *Access data sources across domains* is set to *Enable*.

## Appendix – Switching between InfoPath Converters

As of version 8.0 the PDF Converter comes with two different InfoPath converters, a *legacy converter* as well as a brand new *high fidelity converter*. Both converters provide the same facilities for converting InfoPath forms, including *dynamic view selection* and conversion of InfoPath attachments; however the *high fidelity converter* generates much higher quality output.

This appendix describes how to switch between converters. For more background information as well as additional details on this subject see [this blog post](#). If you wish to enable the new InfoPath converter on Windows Server 2003 then please contact [support@muhimbi.com](mailto:support@muhimbi.com) for details.

### Enabling the high fidelity InfoPath Converter

The high fidelity converter is enabled by default. If the decision was made to enable the legacy converter during installation, but there is a need to switch to the high fidelity version, then please follow the steps below:

1. If not already done so during the PDF Converter's original installation process, deploy Ghostscript to the server running the Conversion Service. For details see section 2.3.3.
2. Edit the conversion service's configuration file. For details about how to do this see [this article](#).
3. Set the value of the *InfoPathConverterFullFidelity.UseNativePrintEngine* setting to *true*.
4. Save the configuration file and restart the Conversion Service

If the Conversion Service is running on multiple systems then repeat these steps for each system.

### Enabling the legacy InfoPath Converter

If the PDF Converter was installed using the default - *high fidelity* - option, but there is a need to switch back to the legacy converter, perhaps because the InfoPath forms were designed specifically for the legacy converter, then you can switch back as follows:

1. Edit the conversion service's configuration file. For details about how to do this see [this article](#).
2. Set the value of the *InfoPathConverterFullFidelity.UseNativePrintEngine* setting to *false*.
3. Save the configuration file and restart the Conversion Service.

If the Conversion Service is running on multiple systems then repeat these steps for each system.

## Appendix - Post processing PDF output to PDF/A

Muhimbi's range of PDF Conversion products supports output in PDF/A1b, A2b & A3b format using the PDF Converter Professional Add-on license. This appendix provides details about how to configure the system to output in PDF/A format.

For more background information as well as additional details on this subject [see this blog post](#).

### Configuring PDF/A

To assist with some of the underlying processing, the Muhimbi PDF Converter utilises Ghostscript in the background. If you wish to convert files to PDF/A then please make sure that Ghostscript is deployed either as part of the installation process or installed manually. For details see section 2.3.3.

Please note that a license for the [PDF Converter Professional](#) is required in addition to a valid *PDF Converter for SharePoint* or *PDF Converter Services* License in order to use this functionality.

Depending on your needs you may need to change the following settings in the Conversion Service's configuration file (see 2.6.2 for details about how to edit this file).

1. **Ghostscript.Path:** Leave this setting empty to auto-detect the location. If Ghostscript was deployed manually to a non-standard path then you will need to enter it here, including the name of the executable, e.g. "E:\Program Files\gs\gs9.04\bin\gs\win64c.exe".
2. **PDFA.PostProcessing:** Some underlying converters can natively output files in PDF/A format, which in some rare cases may be preferential over using Muhimbi's PDF/A facility. Specify one of the following values to control this behaviour:
  - *All:* Post Process files generated by all converters, including the ones that are supposed to already support PDF/A.
  - *WhenNeeded:* Post process files for only those converters that do not support native PDF/A output.
  - *None:* Do not post process files generated by any converters. This is the default option).

Please note that these values will only be used if the output format is set to *PDF\_A1B*, either in the web service call or via the global '*ConversionSettings.ForcePDFProfile*' config value. PDF\_A2b and A3b output is always processed by the PDF Converter and ignores this setting.

Unless you have a good reason to change this, leave this setting alone.

3. **PDFA.RasterizeTransparentContent:** Define how transparent content is dealt with during conversion to PDF/A1b. The default setting (False) removes all transparency. If you wish to retain transparent objects then set this value to *True*, which will result in pages being rasterized resulting in considerably larger and slower PDF files. PDF/A2b and A3b standards natively support transparent content and ignore this setting.

4. **ConversionSettings.ForcePDFProfile:** Override the *ConversionSettings.PDFProfile* value during conversion. Leave this setting empty to use the value specified in the web service call. Accepted values are members of the *Muhimbi.DocumentConverter.WebService.Data.PDFProfile* enum or an empty string. For example: 'PDF\_1\_5' (Use PDF Version 1.5) or 'PDF\_A2B' (Use the PDF/A standard for long term archiving).

Don't forget to restart the *Muhimbi Conversion Service* after making changes to the configuration file.

### Converting to PDF/A

The PDF Converter is a flexible product that makes it possible to carry out conversion using different technologies. Depending on the underlying platform, enabling PDF/A works slightly differently.

1. **SharePoint Designer Workflows:** Use the *Convert Document* workflow action in combination with the XML syntax [described here](#).
2. **Nintex Workflows:** Use the *Convert Document* workflow action in combination with the XML syntax [described here](#).
3. **K2 Workflows:** Use the *Convert Document* SmartObject method action in combination with the XML syntax [described here](#).
4. **Web Service calls:** Please follow the instructions in [this blog post](#). Additional details [can be found here](#).
5. **SharePoint User Interface:** The conversion user interface that ships with the Muhimbi PDF Converter for SharePoint does not contain a PDF/A 'switch'. If there is a need to convert to PDF/A format using the user interface then PDF/A will need to be enabled globally. Please note that doing so will convert all files processed by the PDF Converter to use PDF/A format, which may have unexpected side effects on performance and the ability to apply PDF security.

Global PDF/A output can be enabled as follows:

- Edit the config file and set *ConversionSettings.ForcePDFProfile* to either PDF\_A1B, PDF\_A2B or PDF\_A3B
- If the previous setting is set to *PDF\_A1B* then set the *PDFA.PostProcessing* value to All. There is no need to make this change if *ForcePDFProfile* is set to any other value, including PDF\_A2B and PDF\_A3B.

## Appendix - Unattended (un)installation

Many organisations carry out software deployments via a central software distribution service such as *Microsoft Systems Management Server*. This allows a product to be rolled out to one or more servers without user intervention.

This chapter describes how to automate deployment of the Muhimbi PDF Converter. For more details regarding the various settings, see chapter 2 *Deployment*.

### Installation

The installer follows the standard convention for deploying services in unattended mode. A typical example is provided below:

```
setup.exe /quiet INSTALLATION_TYPE="All" TARGETDIR="C:\Program
Files\Muhimbi Document Converter" USERNAME="<dom>\<user>"
PASSWORD="<password>" GRANT_LOGON_AS_SERVICE="true"
DISABLE_LOOPBACK="true" OPEN_INBOUND_PORT_ON_FIREWALL="true"
INSTALL_GHOSTSCRIPT="false" INFOPATH_CONVERTER="Latest"
INSTALL_PRINTER_DRIVER="true"
LICENSE_FILE="c:\licenses\muhimbi.txt" /l*v install.log
```

The parameters are as follows. Please note they are case sensitive.

Name	Description
INSTALLATION_TYPE	The type of setup to carry out. Use <i>All</i> to install both the Conversion Service and SharePoint WSP, or choose <i>Service</i> or <i>SharePoint</i> .
CONVERSION_SERVER	For installations of type <i>SharePoint</i> , specify the host name or ip-address of the server running the conversion service.
TARGETDIR	For installations of type <i>All</i> or <i>Service</i> , the folder to deploy the Conversion Service to. Omit this parameter to use the default path, '%programfiles%\Muhimbi PDF Converter'.
USERNAME	For installations of type <i>All</i> or <i>Service</i> , the Windows user name – including domain – of the account the conversion service will run under. For local accounts use just the account name.
PASSWORD	The password associated with the account.
GRANT_LOGON_AS_SERVICE	Automatically grant <i>logon as a service</i> to the specified account.
OPEN_INBOUND_PORT_ON_FIREWALL	For installations of type <i>All</i> or <i>Service</i> , configure the standard Windows Firewall to allow inbound traffic on port 41734.
DISABLE_LOOPBACK	For installations of type <i>All</i> or <i>Service</i> , Disable the Windows Loopback check.
INSTALL_GHOSTSCRIPT	This option is currently not available as Ghostscript 10.1 no longer has a Silent Install option. Please download and install Ghostscript manually.
INFOPATH_CONVERTER	For installations of type <i>All</i> or <i>Service</i> , the type of InfoPath converter to use, either <i>Latest</i> or <i>Legacy</i> .
INSTALL_PRINTER_DRIVER	For installations of type <i>All</i> or <i>Service</i> , the option to deploy the printer driver needed for the InfoPath converter.
LICENSE_FILE	The path of the Muhimbi License file to deploy. Omit this value to run in Trial mode.

## Uninstallation

To carry out a silent uninstallation of the Muhimbi PDF Converter, retrieve the *UninstallPath* key from the Windows Registry, taking the version number of the installed product into account, e.g. for version 11.1.0.6:

HKEY\_LOCAL\_MACHINE\SOFTWARE\Microsoft\Windows\CurrentVersion\Uninstall\Muhimbi PDF Converter for SharePoint 11.1.0.6

Please note that the product code is different for each release, but the same for all systems where that specific release has been deployed to. It is typically recommended to add the `/quiet /L*V "uninstall.log"` switches to the command. It then becomes something like the following:

```
msiexec /x {C579BD25-73DA-4374-B566-FB36F7840121} /quiet /L*V "uninstall.log"
```

Uninstallations can also be carried out programmatically. A PowerShell Example is provided below:

```
productname = "Muhimbi PDF Converter For SharePoint"  
$app = Get-WmiObject -Class Win32_Product -Filter "Name = '$productname'"  
$app.Uninstall()
```

Please make sure the user is 'elevated' when uninstalling programmatically.

## Upgrading

The PDF Converter does not support in-place upgrades. When upgrading the software, schedule the *uninstall* command followed by the *install* command.

For more details about upgrading see *Upgrading from a previous version*.



## Appendix - Advanced Deployment Scenarios

Muhimbi's range of server based PDF Conversion products have been developed with [performance, scalability and reliability](#) in mind. As a result the software scales from the most humble 'everything on the same server' environments to environments that deal with millions of conversions a day across a farm of servers. This appendix discusses the most common deployment scenarios.

Whenever this appendix mentions 'Server' it doesn't matter if this is a physical or virtualised server. The software does not differentiate between the two and will work fine on either type.

### Introduction – Architecture

Both the PDF Converter for SharePoint and the PDF Converter Services ship with the same central conversion engine. This engine, *The Muhimbi Conversion Service*, is responsible for carrying out all the work including conversion of files, OCR, watermarking, merging, splitting and security activities. Although in case of the PDF Converter for SharePoint the front end is quite comprehensive, all it really does is prepare requests for the Conversion Service and receive responses containing new or modified documents.

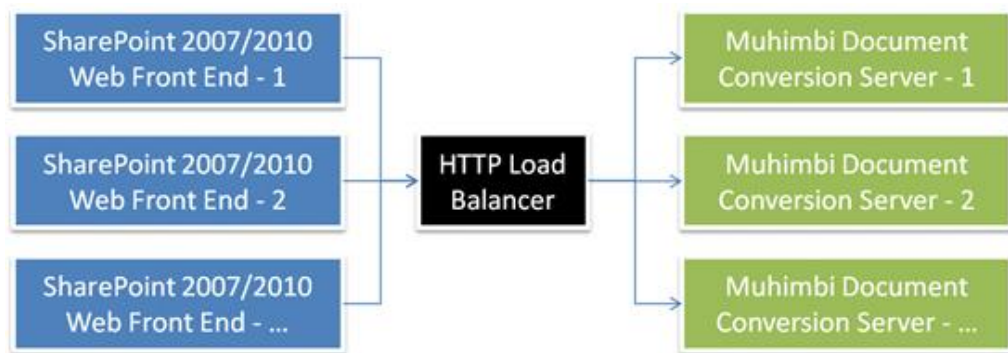
The Muhimbi Conversion Service is a standard Windows Service that starts automatically when Windows boots up and requires no user interaction or anyone to be logged in to the server console.

This Windows Service contains a WCF based Web Service that exposes functionality to any Web Services capable environment including *Java, C#, VB.NET, Documentum, SAP, Ruby, PHP* etc. Typically when administrators think about web services they assume that they need to host this inside a web server such as IIS or Apache. Although that may be true for many web services, Muhimbi's PDF Conversion software runs inside a *self-hosted* WCF service that does not have any external dependencies on third party web servers.

Basing the conversion service on WCF results in a lot of benefits, including:

1. No external dependencies on web servers and other 3rd party products.
2. A mature framework with support for different message and transport types, built-in security and advanced features such as [MTOM encoding](#) for large attachments.
3. And most importantly, all functionality is exposed via standard HTTP based Web Service requests.

This last point about requests being HTTP based is very important as it allows the Conversion Service to be scaled across multiple servers using standard hardware or software based load balancers, including the free NLBS that ships with Windows. By utilising a load balanced environment you can achieve linear scalability and automatic failover.



*Example based on SharePoint Front ends, but Java and .NET deployments work the same.*

For details about tuning the various options of the Muhimbi Conversion Service, and installation in general, see the *Resources* section at the end of this appendix.

## Single Server Farm

The most basic configuration possible is to install everything on a single server. Just follow Chapter 2 in this Administration Guide and choose the default option to deploy both the Conversion Service and the SharePoint front-end. There is nothing else to configure and, if needed, the Web Service can be accessed on the following URL:

`http://localhost:41734/Muhimbi.DocumentConverter.WebService/`

## Small farms with a single Conversion Server

For slightly larger deployments of 2 or more servers, but with a single conversion server, deployment is very simple as well. Let's take the following example:

- **Server 1:** A new or existing Application Server that will run the Muhimbi Conversion Service.
- **Server 2:** A server that will run either a SharePoint WFE or a custom solution.

In this particular case it is a matter of executing the installer on *Server 1* as per the instructions in Chapter 2 of this Administration Guide.

If the PDF Converter is installed in a SharePoint environment then the default option is to install the Conversion Service on the local machine (in this case *Server 1*) and also deploy the SharePoint front-end (WSP files) to all SharePoint servers (in this example *Server 2*).

If the decision is made to only install the Conversion Service then the installer will need to be executed again on *Server 2* to deploy just the SharePoint front-end without deploying another instance of the Conversion Service. In that case you will be asked to enter the host name of the server that runs the conversion service, which – in this example – is the hostname of *Server 1*.

The web service URL is now as follows:

`http://Server1:41734/Muhimbi.DocumentConverter.WebService/`

Where *Server1* is the conversion server's host name.

## Large farms with multiple conversion servers

More complex environments that require a high level of scalability and the ability to fail-over between servers usually utilise multiple front end servers and multiple conversion servers. For example:

- *Server 1*: A new or existing Application Server that will run the Muhimbi Conversion Service.
- *Server 2*: A new or existing Application Server that will run the Muhimbi Conversion Service.
- *Server 3*: A server that will run either a SharePoint WFE or a custom solution.
- *Server 4*: A server that will run either a SharePoint WFE or a custom solution.
- Load Balancer

In this scenario the Conversion Service will need to be installed on Server 1 and Server 2 as per the instructions in Chapter 2 of this Administration Guide. Once installation is complete the web service can be reached on the following 2 URLs:

```
http://Server1:41734/Muhimbi.DocumentConverter.WebService/  
http://Server2:41734/Muhimbi.DocumentConverter.WebService/
```

Although in theory you could build functionality into your software to alternate requests between these two URLs, it is much easier and more robust to use an off-the-shelf HTTP load balancer or Windows NLBS. How this works in detail differs per load balancer, but it usually involves creating a *virtual host* and configure this virtual host to send requests to *Server1* and *Server2*. In this example we assume that this virtual host is named *LoadBalancer*, resulting in the following Web Service URL:

```
http://LoadBalancer:41734/Muhimbi.DocumentConverter.WebService/
```

In case of a SharePoint deployment execute the installer on one of the Web Front End servers (Server 3 or 4, it doesn't matter which) and choose the option to *Install the SharePoint front-end on the entire farm*.

You will be asked to enter the network name or ip-address of the server running the Conversion Service, which in this example is *LoadBalancer*. The installer will check that a Conversion Service is listening at the specified address, so make sure the Conversion Service and load balancer are configured before deploying the SharePoint front-end.

If you have multiple SharePoint Web Front End servers it may be tempting to install a copy of the Conversion Service on each WFE. Although this is a supported scenario we recommend deploying the Conversion Service on separate Application Servers to make sure that all the WFE's resources are available for running SharePoint, which can be quite resource hungry by itself.

## Licensing

Please make sure that licenses are in place for the correct number of servers. Muhimbi's software is licensed on a 'per server' basis. This means that you need a license for every server that runs our software including all Web Front End servers in your SharePoint farm and all servers running the conversion service.

For more details see this [Knowledge Base Article](#).

## Resources

For more details about deployment and configuration see the following resources:

- [Deployment related topics in the Knowledge base](#).
- [Hardening / Securing the server that runs the Conversion Service](#).

## Appendix - Using Word Automation Services

Microsoft introduced *Word Automation Services* (WAS) as part of SharePoint 2010, a technology that supports the conversion of MS-Word files. Muhimbi's PDF Converter comes with an optional plug-in to use WAS as a replacement for the standard MS-Word based converter.

If you are planning to convert only Word, HTML, MSG, AutoCAD and Image based formats - and don't need to convert Excel, InfoPath, PowerPoint, Visio - AND you are using SharePoint Server 2010 (Not 2007 or the free SharePoint 2010 / 2013 Foundation) then you may want to consider going down the Word Automation Services road. If you do need any of the other formats then there is no benefit in using WAS, it just complicates installation and maintenance.

*The latest version, and further details, of this appendix can be found [in this post on our Blog](#). The instructions provided here apply to SharePoint 2010 only, minor changes are required to use the PDF Converter in combination with SharePoint 2013 and 2016 versions of WAS. Contact [support@muhimbi.com](mailto:support@muhimbi.com) for details.*

### Implementation

Muhimbi's *Word Automation Services plug-in* transparently replaces the stock MS-Word converter. As a result there is no need to re-write any of your Muhimbi workflows or teach your end users anything new.

All other facilities provided by the PDF Converter for SharePoint remain unchanged. It is still possible to convert between file formats other than MS-Word and PDF. Converted PDF files can still be secured, watermarked, merged or split.

The only changes that need to be made is enabling *Word Automation Services* and making a change in the Document Converter's configuration file. Details can be found below.

### Enabling Word Automation Services

Providing SharePoint Server 2010 has already been installed, enabling *Word Automation Services* is relatively simple. The steps - using Central Administration - are summarised below, but can also be automated using PowerShell. A Word Automation Services Guide is also [available on MSDN](#).

1. Open SharePoint Central Administration.
2. On the Central Administration home page click *Manage Service Applications*.
3. If the service is not already listed, use the 'New' menu in the ribbon and add *Word Automation Service*.
4. Follow the Wizard / questions to create the Database and Application pool. Please make sure the Application pool account has proper access to the web application / Database that contains input files (See *TempDocLibPath* below).

5. In the page opened as part of step #2 above click *Word Automation Service* in order to configure it.
6. Accept the default settings except for the following values (See screenshot below):
  - Disable Embedded Fonts: No
  - Conversion Processes: '2' (or higher if you anticipate a larger number of parallel conversions)
  - Maximum Conversion Attempts: 1

Navigate to *System Settings / Manage services on server* and enable *Word Automation Services*.

Navigate to *Application Management / Configure Service Application Associations* and make sure *Word Automation Services* is enabled in at least one proxy group. If you don't do this then you must configure the service name in the Conversion Service's configuration file (see below)

<b>Supported File Formats</b> Specify which file formats can be opened by the service application. If a file type is unchecked, users of this service will receive an error when attempting to open files of that type.	<b>Supported File Formats:</b> <input checked="" type="checkbox"/> Open XML Document (.docx, .docm, .dotx, .dotm) <input checked="" type="checkbox"/> Word 97-2003 Document (.doc, .dot) <input checked="" type="checkbox"/> Rich Text Format (.rtf) <input checked="" type="checkbox"/> Web Page (.htm, .html, .mht, .mhtml) <input checked="" type="checkbox"/> Word 2003 XML Document (.xml)
<b>Embedded Font Support</b> To preserve visual fidelity across different machines, a user can choose to embed fonts within the document. Use this setting to determine whether or not embedded fonts are used when converting documents.	<b>Disable embedded fonts?</b> <input type="radio"/> Yes <input checked="" type="radio"/> No
<b>Maximum Memory Usage</b> Specify the maximum percentage of system memory made available to the service application, as a percentage of overall system memory.	<b>Percentage of memory:</b> <input type="text" value="50"/>
<b>Recycle Threshold</b> Specify the number of documents converted by a conversion process before it is restarted.	<b>Recycle threshold:</b> <input type="text" value="100"/>
<b>Word 97-2003 Document Scanning</b> To provide added security when loading Word 97-2003 documents, extra checks are performed before those documents are opened. These checks can have an impact on overall service performance.  Only disable this setting if you trust ALL documents loaded by the service application.	<b>Disable Word 97-2003 Document scanning?</b> <input type="radio"/> Yes <input checked="" type="radio"/> No
<b>Conversion Processes</b> Specify the number of conversion processes created on each server available to the service application. The number of conversion processes is equivalent to the number of conversions that can be performed simultaneously.	<b>Conversion processes:</b> <input type="text" value="2"/>
<b>Conversion Throughput</b> Specify the frequency with which groups of conversions are started, and the number of conversions within each group. Setting these values too high or too low can affect performance.	<b>Frequency with which to start conversions (minutes):</b> <input type="text" value="5"/>  <b>Number of conversions to start (per conversion process):</b> <input type="text" value="300"/>
<b>Job Monitoring</b> Specify the length of time before conversions are monitored and, if necessary, restarted.	<b>Length of time before conversion status is monitored (minutes):</b> <input type="text" value="5"/>
<b>Maximum Conversion Attempts</b> Specify the maximum number of times a conversion is attempted before its status is set to Failed.	<b>Maximum conversion attempts:</b> <input type="text" value="1"/>



## Configuring the PDF Converter to use Word Automation Services

Once the *Word Automation Service* has been installed and configured, the final change that needs to be made is disabling the stock MS-Word Converter in the Conversion Service's configuration file and enabling the Word Automation Service's plug in. The steps are as follows:

1. Create a central Document Library / Folder in SharePoint to hold the temporary files used by the converter. You can hide this library from the end users if you wish.
2. Make sure the accounts the Conversion Service and Word Automation Services run under have read and write access to this library. The easiest (as in quick and dirty) thing to do is to use the Application Pool account used by the relevant Web Application or add the Conversion Service account to the *WSS\_Content\_Application\_Pools* database role. If you are setting up a separate account with more fine grained security then give it rights on:
  - **Content Database:** Any account accessing SharePoint content will need to be given rights similar to your Web Application Pool accounts on the relevant Content Database(s).
  - **Config Database:** The same rights need to be given on the Configuration database for the farm.
  - **SharePoint rights:** Naturally regular SharePoint rights will need to be set on the Document Library that holds the temporary files. The account requires privileges to Create, Read and Delete files.
3. Open *Muhimbi.DocumentConverter.Service.exe.config* in Notepad. This file is located in the folder the Muhimbi Conversion Service has been deployed to. A handy shortcut to this folder can be found in the Muhimbi group in the Windows Start Menu.
4. Search for "WordProcessing" (including the quotes) and use XML comments `<!-- -->` to comment out the entire 'add' element (see below for an example).
5. Remove the XML comments for the converter named "WordAutomationServiceConverter" directly underneath.
6. In the *parameter* attribute of *WordAutomationServiceConverter* make the following changes:
  - **Service Name:** If you do not wish to use the standard WAS Proxy then enter the WAS Service's name here. Otherwise leave it empty.
  - **TempDocLibPath:** The full path to the Document Library / Folder name created as part of step #1.

As the WAS based converter does not support all file formats, remove all references to *txt*, *wps*, *eml*, *odt* and *ott* in *CrossConverter\_MHT* for both the *supportedExtensions* and *supportedOutputFormats* attributes.

Open *Services.msc* from the Start Menu and restart the *Muhimbi Document Converter Service*.

In the PDF Converter's Central Administration page enable the new *Word Automation Service* and click 'Validate Settings'.



The XML in the configuration file should now look something like this:

```
<!--<add key="WordProcessing"
description="Word Processing (e.g. MS-Word, RTF, TXT)"
fidelity="Full"
supportedExtensions="doc,docx,docm,rtf,txt,wps,xml,eml,odt,ott,mht,html,htm"
supportedOutputFormats="xps,pdf,doc,docx,rtf,txt,html,mht,xml,odt"
type="Muhimbi.DocumentConverter.WebService.WordProcessorConverterFullFidelity,
Muhimbi.DocumentConverter.WebService, Version=1.0.1.1, Culture=neutral,
PublicKeyToken=c9db4759c9eaad12" /> -->
<add key="WordAutomationServiceConverter"
description="Word Automation Service (e.g. MS-Word, RTF, MHT)"
fidelity="Full"
supportedExtensions="docx,docm,dotx,dotm,doc,dot,rtf,htm,html,mht,mhtml,xml"
supportedOutputFormats="docx,docm,doc,mht,pdf,rtf,xml,xps"
type="Muhimbi.DocumentConverter.WebService.WordAutomationServiceConverter,
Muhimbi.DocumentConverter.WebService, Version=1.0.1.1, Culture=neutral,
PublicKeyToken=c9db4759c9eaad12"
parameter="Service Name=;TempDocLibPath=http://your site/sites/your web
app/Temp"/>
```

Once the service has restarted try converting an MS-Word file. If you are encountering any errors then please look in the Windows Application Event Log and / or SharePoint's ULS logs. We have tried to make the errors as descriptive as possible.

A common problem when using WAS is that it takes a long time to spin-up, making it appear to our software that it is hanging, resulting in a *not responding* error. If this is the case in your environment then we recommend changing the value of the *MAX\_HUNG\_COUNT* value in the PDF Converter's configuration file from 15 (seconds) to 45.

## Appendix - STSADM Commands

Wherever possible the *PDF Converter for SharePoint* provides a User Interface for specifying settings. However, some settings are so infrequently used that creating special screens for them just leads to confusion.

Instead a number of 'stsadm' commands are provided to tweak these settings. This section lists all available settings, they all use the standard '*STSADM -o setproperty*' syntax. Please note that the value can be deleted by specifying nothing after the '-pv' switch.

*Please note that all these settings are global and apply to all Web Applications and Site Collections.*

### Alternative Check-in Behaviour (version 6.1.0.66+)

The default behaviour of the PDF Converter's SharePoint front end is to always check-in files on document libraries that don't explicitly require a check-out to be performed first, even when mandatory data is missing. If this is not desirable and you wish files with missing meta-data to remain checked out then issue the following command on one of your farm's SharePoint servers:

```
stsadm.exe -o setproperty -pn Muhimbi.SharePoint.DocumentConverter.PDF  
.CheckOutWhenRequiredFieldsEmpty -pv true
```

For more details on the topic of *check-in behaviour* see [this KB Article](#).

### Skip certain fields when copying meta-data (version 6.1.0.66+)

The PDF Converter for SharePoint provides a number of facilities to copy meta-data between files. Although we automatically skip certain fields, including calculated fields, some custom fields you may never want to copy. This very much depends on your own requirements, but suffice to say that you can specify a list of fields to ignore when copying meta-data. For example the following command will make sure that the *Title* and *User* fields are never copied (unless explicitly listed in the Copy Meta-Data workflow activity).

```
stsadm.exe -o setproperty -pn Muhimbi.SharePoint.DocumentConverter.PDF  
.SkipMetaDataFieldNames -pv Title;User
```

### Always send PDF files to the Conversion Service (version 6.0.0.62+)

By default Muhimbi's SharePoint front end software does not send any files that are already in PDF format to the conversion server. If you have written a custom converter (See *Appendix - Creating Custom Converters*) that requires PDF files to be sent to the conversion server then execute the following command:

```
stsadm.exe -o setproperty -pn Muhimbi.SharePoint.DocumentConverter.PDF  
.SkipPDFFiles -pv false
```

## Specify HTML Conversion delay for Personal Actions menu (8.4+)

Due to the way SharePoint internally renders web pages, the Muhimbi [Web Page to PDF Converter](#) waits 2 seconds between loading the page and converting it to PDF. This value can be tweaked using the following stsadm command (Values in milliseconds, so specify 5000 for 5 seconds).

```
stsadm.exe -o setproperty -pn  
muhimbi.SharePoint.DocumentConverter.PDF.  
WebPageConversionDelay -pv 5000
```

## Appendix - Creating Custom Converters

The *Muhimbi PDF Conversion Service* allows custom converters to be added with relative ease. This is useful for converting file types specific to your organisation or for file types that have not (yet) been implemented by Muhimbi in the main product.

The following example describes how to replace the existing MS-Word converter, which relies on MS-Word being present, with a simple third party converter that works well enough for simple documents. Some programming knowledge is required.

*It is also possible to use 3<sup>rd</sup> party executables as custom converters without any programming, see Appendix - Invoke 3rd party Converters.*

The steps are as follows:

1. Create a new Visual Studio project, select *Class Library (C#, .net 4.0)* as the template and give the project an appropriate name, e.g. *CustomConverters*.
2. Add references to the following DLLs. They are located in the folder the Muhimbi Document Conversion Service has been installed in, usually *c:\Program Files\Muhimbi....*
  - Muhimbi.dll
  - Muhimbi.DocumentConverter.WebService.dll
  - Muhimbi.DocumentConverter.WebService.Data.dll
  - System.Runtime.Serialization (Add reference from the .NET tab)
3. Change your project's Assembly name and default namespace to something sensible, e.g. *Muhimbi.DocumentConverter.WebService.CustomConverters*. This can be done by *right-clicking* on your project and selecting *Properties*. The *Application* tab allows these settings to be changed.
4. Delete the automatically generated *class1.cs* file and add a new class named *WordConverter.cs*. **Make sure the class definition is *public*.**
5. Inherit *Muhimbi.DocumentConverter.WebService.AbstractDocumentConverter* in the *WordConverter* class and implement the members (*right-click* on the base class name and select *Implement Abstract Class*).
6. Add the following 2 constructors and make sure they call the base constructors.

```
public WordConverter() : base()
{

}

public WordConverter(Stream sourceFile, OpenOptions openOptions,
                    ConversionSettings conversionSettings)
    : base(sourceFile, openOptions, conversionSettings)
{

}
```

- Next up, we need to implement the *RunDiagnostics* method. This method is normally used to carry out an internal end-to-end conversion to verify that the converter and all prerequisites have been installed correctly. In this test we simply return a new *DiagnosticResultItem* with the *Valid* property set to *true*.

```
public override DiagnosticResultItem RunDiagnostics()
{
    DiagnosticResultItem dri = new DiagnosticResultItem();
    dri.Valid = true;
    return dri;
}
```

- If we need to look further than just the file extension to determine the file type then we can optionally override the *CanConvert* method and look inside the stream (available in the *\_sourceFile* member variable). This is not necessary for this sample converter, but an example is provided below.

```
public override bool CanConvert(string[] fileExtensions)
{
    // ** Do we know anything about this extension
    if (base.CanConvert(fileExtensions) == false)
        return false;

    // ** Investigate in more detail
    ...implement your own...
}
```

- The next and final method to implement is the actual *Convert* method, which is where all the magic happens. As it is not feasible to develop an MS-Word to PDF converter from scratch, the sensible approach to take is to use a third party library such as [SyncFusion DocIO](#) or [Aspose.Words](#) (download the archive that contains just the DLLs). In this example we are going to use Aspose's library for processing MS-Word files. It is not perfect, but for some documents such as forms and simple text documents it works very well.

Copy *Aspose.Words.dll* into the project directory and add a reference to it. Copy the following code into the *WordConverter* class.

```
public override Stream Convert()
{
    try
    {
        // ** Validate as certain options are not supported by this converter
        if (_openOptions.AllowMacros != MacroSecurityOption.None)
            Logger.Warn("Macros are not supported by this converter.");

        // ** Set the licences for Aspose.Words.
        Aspose.Words.License wordLicence = new Aspose.Words.License();
    }
}
```

```
//wordLicence.SetLicense("Enter your license in here.");

Document asposeDocument = new Document(_sourceFile, null,
                                         LoadFormat.Auto, _openOptions.Password);

// ** Do we need to refresh the fields etc?
if (_openOptions.RefreshContent == true)
    asposeDocument.Range.UpdateFields();

// ** Convert the Document to PDF and save it as a memory stream.
if (_conversionSettings.Format == OutputFormat.PDF)
{
    MemoryStream convertedStream = new MemoryStream();
    PdfOptions options = new PdfOptions();
    // ** Specify the PDF Profile
    if (_conversionSettings.PDFProfile == PDFProfile.PDF_1_5)
        options.Compliance = PdfCompliance.Pdf15;
    else
        options.Compliance = PdfCompliance.PdfA1b;

    // ** How to deal with bookmarks
    if (_conversionSettings.GenerateBookmarks ==
        BookmarkGenerationOption Automatic)
        options.HeadingsOutlineLevels = 9;
    else if (_conversionSettings.GenerateBookmarks ==
        BookmarkGenerationOption Custom)
        options.BookmarksOutlineLevel = 9;

    // ** Correct the start and end pages if needed
    int startPage = _conversionSettings.StartPage != 0 ?
        _conversionSettings.StartPage - 1 : 0;
    int pageCount = asposeDocument.PageCount - startPage;
    if (_conversionSettings.EndPage != 0)
        pageCount = Math.Min(_conversionSettings.EndPage - startPage,
                             pageCount);

    // ** Carry out the actual conversion
    asposeDocument.SaveToPdf(startPage, pageCount, convertedStream,
                             options);
    return convertedStream;
}
else
{
    throw new NotSupportedException("Outputformat '" +
                                    _conversionSettings.Format +
                                    "' not supported by this Converter.");
}
}
catch (UnsupportedFileFormatException ex)
{
    throw new WebServiceInternalException(
        WebServiceExceptionType.FileFormatNotSupported, ex.Message);
}
catch (Exception ex)
{
    string message = "An error occurred while converting a file";
    if (_openOptions != null && _openOptions.OriginalFileName != null)
        message += " - " + _openOptions.OriginalFileName;
    Logger.Error(message, ex);
    throw new WebServiceInternalException(
        WebServiceExceptionType.InternalError, message);
}
}
```

10. Compile the project and copy the output DLL as well as *Aspose.Words.dll* to the directory that holds the *Muhimbi Document Conversion Service*.

11. Edit the service's config file and make the following changes:

- If the file extensions for the new converter are currently handled by a different converter then remove these extensions from the existing converter.
- Add the definition for the new converter to the config file as per the following example. For details see 2.6.2 *Fine-tuning the Document Conversion service*.

```
<add key="CustomWordConverter"
      description="Custom MS-Word Converter"
      fidelity="Full"
      supportedExtensions="doc,docx"
      type="Muhimbi.DocumentConverter.WebService.CustomConverters.WordConverter,
            Muhimbi.DocumentConverter.WebService.CustomConverters,
            Version=1.0.0.0, Culture=neutral, PublicKeyToken=null" />
```

12. Restart the service to activate the changes.

```
Net stop "Muhimbi Document Converter Service"
Net start "Muhimbi Document Converter Service"
```

13. Finally test if everything is working correctly, either from:

- **SharePoint:** Open *Central Administration / Application Management / Muhimbi Document Converter Settings* (In SharePoint 2010 / 2013 this screen is located in *Central Admin / General Application Settings / Muhimbi Document Converter Settings*), verify that the new converter is added to the list, check the tick box and click *Validate Settings*. If everything is working correctly then don't forget to save the changes using the *OK* button.
- **Winforms Diagnostics Tool:** Launch the *Diagnostics Tool* from the Windows Start Menu, navigate to the *WS Diagnose* Tab and click the *Request Diagnostics* button. Verify the new converter is listed and *Valid = True*.

Any errors are logged to the Windows Application Event Log.

Congratulations, you have created your first custom converter. Source code for *WordConverter.cs* and the latest version of this tutorial can be found on the [Muhimbi website](#).

Please note that by default Muhimbi's SharePoint front end software does not send any files that are already in PDF format to the conversion server. If you have written a custom converter that requires PDF files to be sent to the conversion server then execute the following command on one of your SharePoint Front End Servers:

```
stsadm.exe -o setproperty -pn Muhimbi.SharePoint.DocumentConverter.PDF.SkipPDFFiles -pv false
```



### Exception handling

Although you can let exceptions bubble up, we recommend catching any exceptions, inspecting the root cause of the problem and then throwing a specific *WebServiceInternalException* using one of the following exception types.

```
public enum WebServiceExceptionType
{
    /// <summary>
    /// Unknown error
    /// </summary>
    Unknown,
    /// <summary>
    /// File format not supported
    /// </summary>
    FileFormatNotSupported,
    /// <summary>
    /// File corrupt
    /// </summary>
    CorruptDocument,
    /// <summary>
    /// An error occurred while opening the file
    /// </summary>
    ErrorOpeningFile,
    /// <summary>
    /// Conversion process timeout
    /// </summary>
    ConversionTimeOut,
    /// <summary>
    /// Application hang. Can happen when document is password protected
    /// </summary>
    ConverterNotResponding,
    /// <summary>
    /// The underlying converter has not been installed or not correctly installed.
    /// </summary>
    ConverterNotInstalled,
    /// <summary>
    /// Internal Validation (Should only happen during development)
    /// </summary>
    InternalError,
    /// <summary>
    /// The specified output format is not supported (e.g. XPS output for HTML
    /// conversion)</summary>
    OutputFormatNotSupported,
    /// <summary>
    /// Configuration file is invalid, e.g. no steps defined in a multi step converter
    /// </summary>
    ConfigurationError,
    /// <summary>
    /// The trial has expired (e.g. when processing non-PDF files)
    /// </summary>
    TrialExpired,
    /// <summary>
    /// Problem in external dependency, e.g. Ghostscript not installed or
    /// wrong version.
    /// </summary>
    ExternalDependencyError
}
```

## Appendix - Invoke 3<sup>rd</sup> party Converters

The PDF Converter has had the ability to add custom converters for a while (See *Appendix - Creating Custom Converters*). However, although these plug-ins work very well, if you are not a developer, or you are not familiar with .net based development, then implementing a custom converter may be less than trivial.

As of version 6.1 it is possible to use existing command line based 3<sup>rd</sup> party conversion engines using the new *Command Line Converter*.

*The latest version, and further details, of this topic can be found [in this post on our Blog](#). A number of examples can be found in our [Knowledge Base](#).*

The Command Line Converter is very simple to setup as you can see in the following config file fragment for Siemens Teamcenter:

```
<add key="CommandLineConverter"
description="Converts using 3rd party executables"
fidelity="Full"
supportedExtensions="hp,hpg,hpgl,hpgl2,plt,cgm,m1r"
supportedOutputFormats="pdf"
type="Muhimbi.DocumentConverter.WebService.CommandLineConverter,
Muhimbi.DocumentConverter.WebService, Version=1.0.1.1, Culture=neutral,
PublicKeyToken=c9db4759c9eaad12"
parameter="c:\splm\vis20072\VVCP\prepare.exe | -PDF {0} -combine -page all
-out {1} -overwrite -size {Parameter1}"/>
```

The parameters are as follows:

1. **key:** Give the converter a unique name in case multiple Command Line Converters are in use. Otherwise accept the default value.
2. **description:** The description of the converter exposed via the web services API. As, for example, displayed in our SharePoint Central Administration screen.
3. **supportedExtensions:** A list of input file formats supported by this converter.
4. **supportedOutputFormats:** The file formats the converter can generate. This is not limited to just PDF as our software fully supports cross-conversion.
5. **type:** Do not touch.
6. **parameter:** The location of the 3rd party converter and the arguments to send to it. Note that these 2 values are separated by a vertical pipe character '|'. The arguments section supports the following parameters:
  - **{0}:** This will automatically be replaced with the full path to the input file.
  - **{1}:** This will automatically be replaced with the full path and filename where the output file should be generated.

- **{Parameter1}, {Parameter2}....{Parameter10}**: Optional parameters that can be passed in via the web services interface using *ConverterSpecificSettings\_CommandLineConverter*. Use this to pass proprietary information to the third party converter such as page size or special processing instructions.

Once everything has been configured, all mapped file formats will be picked up automatically and treated exactly the same as all other file formats supported by the Muhimbi PDF Converter.

## Appendix – Deploying K2 Integration facilities

As of version 7.3, the Muhimbi PDF Converter for SharePoint provides native support for the K2 blackpearl workflow engine. The same Workflow Activities that we [make available for Nintex Workflow](#), SharePoint Designer Workflows and Visual Studio Workflows are now exposed as K2 SmartObjects as well.

This section describes how to deploy the PDF Converter's K2 integration facilities to a typical K2 environment. All screenshots and installation steps are based on the K2 Core 5.5.1 reference virtual machine, which runs K2 blackpearl 4.6.6 and SharePoint 2010. Unless stated otherwise, the steps for SharePoint 2007 and 2013 as well as other K2 versions are identical.

*A note on licensing the Muhimbi PDF Converter for SharePoint when used in combination with K2 blackpearl. Muhimbi's licensing model is very simple, if a server runs Muhimbi Software in any way shape or form, then it requires a license. Even though the PDF Conversion engine may be installed on a non-K2 server, all K2 Servers run our SmartObjects and therefore require a license.*

### Prerequisites

Deployment of the K2 Integration Facilities is relatively straight forward as long as these instructions are followed carefully.

Begin by making sure the prerequisites are installed:

1. If you have not already done so, please [download](#) the Muhimbi PDF Converter for SharePoint version 7.3 (or later) from the Muhimbi Website and deploy it to your SharePoint farm in line with Chapter 2.
2. Please make sure your K2 environment is running version 4.5 or later.
3. In order to deploy the PDF Converter's K2 facilities please make sure you have the appropriate privileges to deploy new Service Types, Service Instances and SmartObjects to K2.

### Copy installation files

Once the prerequisites are in place, please deploy Muhimbi's K2 Integration facilities to all K2 servers using the following steps:

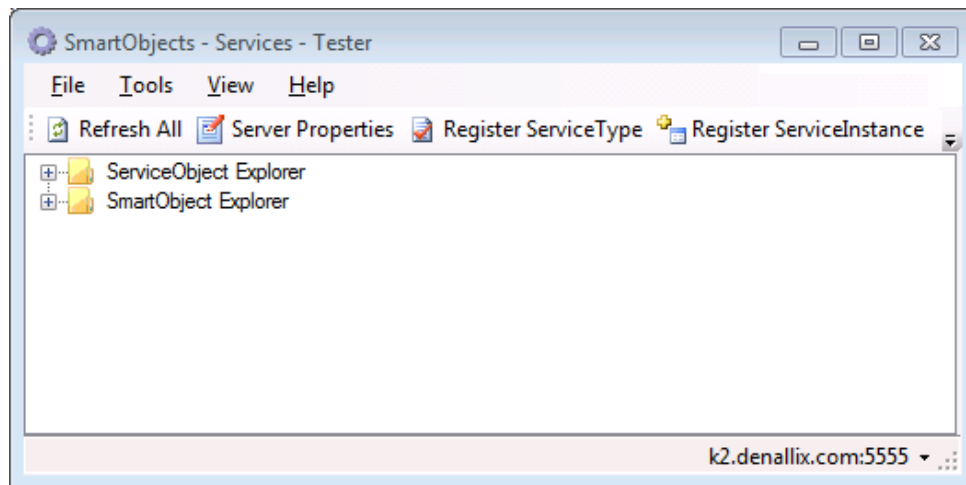
1. When using K2 in combination with SharePoint 2007, then enable the *Muhimbi PDF Converter - API registration* Web Application scoped SharePoint Feature on all web applications that interact with K2 workflows.
2. Copy the contents of the *K2 Integration* folder - located in the Conversion Services installation folder, see the *Muhimbi Document Converter / Open Installation Folder* shortcut in the Windows Start Menu - to the K2 server and place the contents directly in *C:\Program Files (x86)\K2 blackpearl\ServiceBroker*. If K2 blackpearl was deployed to a different folder, then please amend the path accordingly.

Repeat step #2 on all K2 Servers.

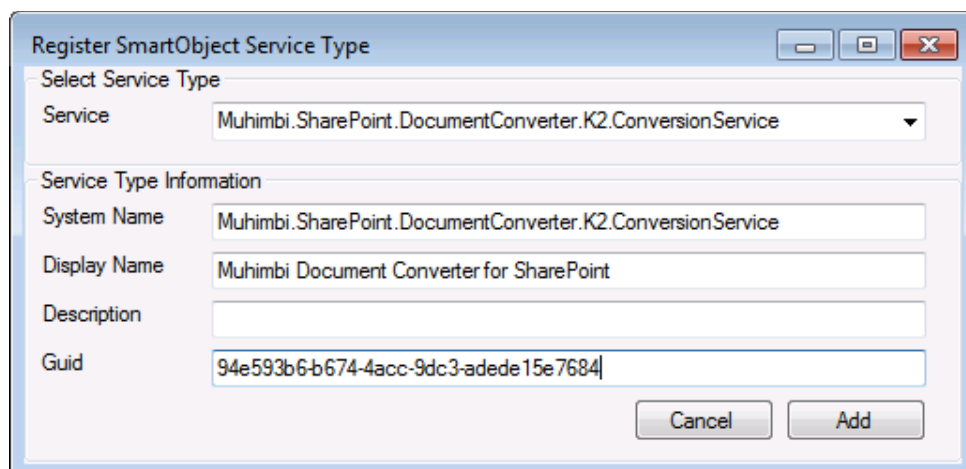
## Register the Service Type

With the relevant files in place, the next step is to register the *Service Type*. Throughout this guide you will be asked to enter certain 'GUIDs', although in theory you can use different ones, future versions of the Muhimbi PDF Converter will come with automatic deployment and upgrade scripts that assume the GUIDs specified below were used. If you really know what you are doing, and have a good reason to use different GUIDs, then please feel free to do so. However, this may make future upgrades a manual task.

1. Start the *SmartObject Service Tester* from 'C:\Program Files (x86)\K2 blackpearl\Bin\SmartObject Service Tester.exe'



2. Click on *Register ServiceType* in the toolbar and enter the following:
  - a. **Service:** Select the following from the dropdown menu  
Muhimbi.SharePoint.DocumentConverter.K2.ConversionService
  - b. **System Name:** Accept the default
  - c. **Display Name:** Muhimbi Document Converter for SharePoint
  - d. **Guid:** 94e593b6-b674-4acc-9dc3-adede15e7684



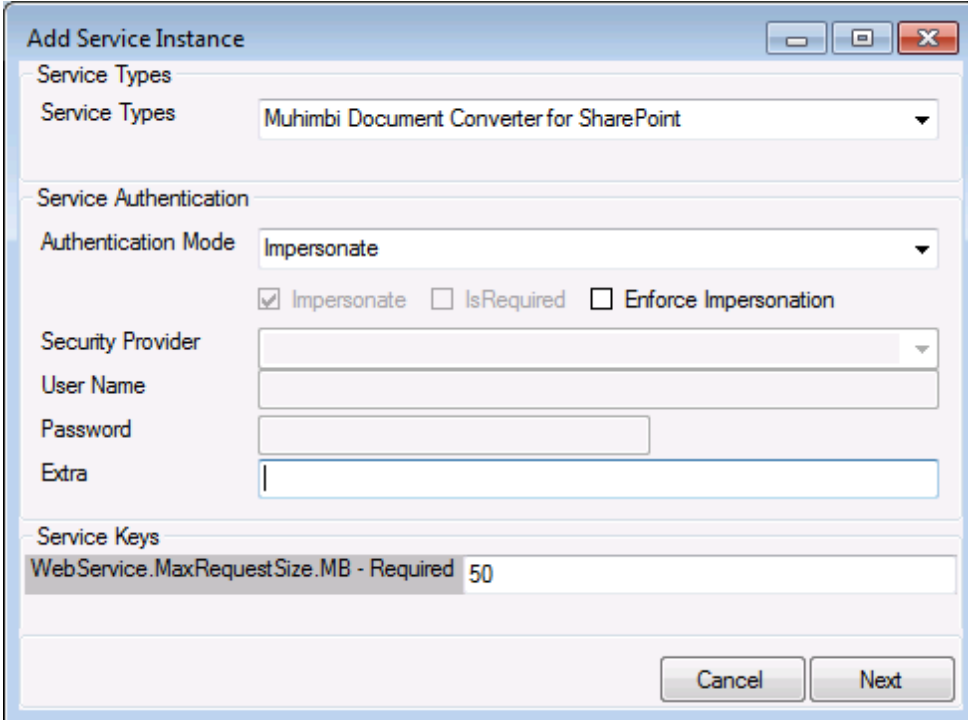
3. Click the 'Add' button to complete the process.

There is no need to repeat these steps on other K2 Servers. This information is stored centrally.

## Register Service Instance

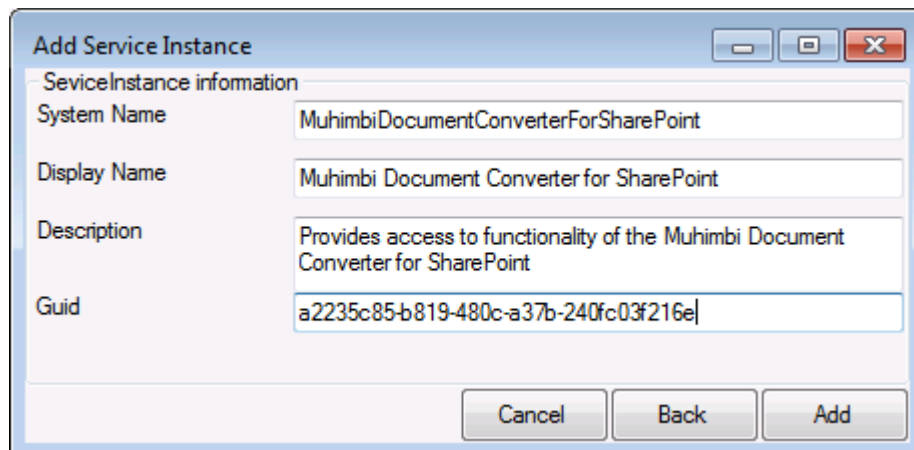
With the *Service Type* registered we can now create a *Service Instance*.

1. In the *SmartObject Service Tester*, open the *ServiceObject Explorer* node.
2. Right click the *Service Type* we created in the previous step (Muhimbi Document Converter for SharePoint) and select *Register ServiceInstance*.



The image shows a Windows-style dialog box titled "Add Service Instance". It contains several sections: "Service Types" with a dropdown menu set to "Muhimbi Document Converter for SharePoint"; "Service Authentication" with a dropdown for "Authentication Mode" set to "Impersonate", and three checkboxes: "Impersonate" (checked), "IsRequired" (unchecked), and "Enforce Impersonation" (unchecked); "Security Provider" with a dropdown menu; "User Name" with a text input field; "Password" with a text input field; "Extra" with a text input field; and "Service Keys" with a text input field containing "WebService.MaxRequestSize.MB - Required 50". At the bottom right are "Cancel" and "Next" buttons.

3. Accept the standard *Authentication Mode*, but if you have reason to do so you can change it.
4. By default the Conversion Service accepts files up to 50MB, as this is the limit set in most SharePoint environments. However, if you expect to deal with large documents, or are expecting to merge multiple documents together of a combined total of more than 50MB, then feel free to change this number. Please keep in mind that the same change will need to be made in the Conversion Service's configuration file, details can be found [here](#).
5. Click *Next*.
6. Accept the default values for all fields except for Guid, which should be set to the following value: a2235c85-b819-480c-a37b-240fc03f216e.



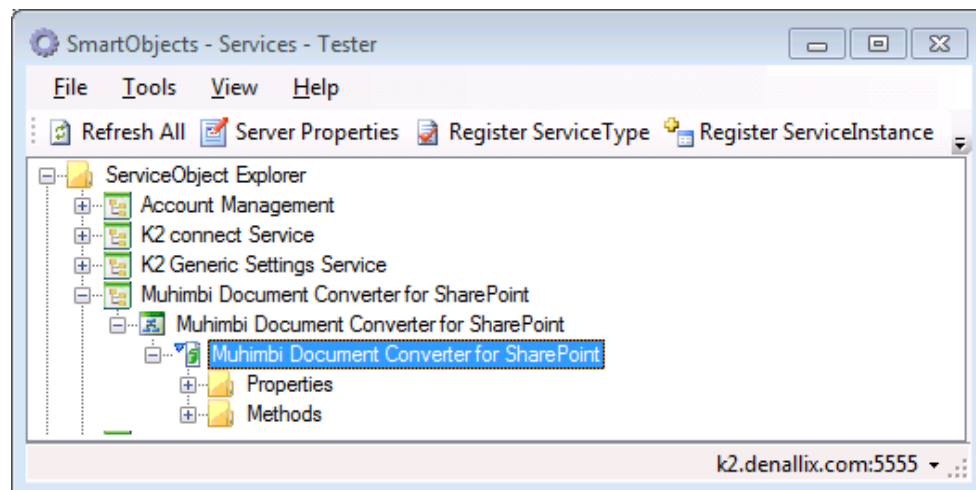
7. Click the 'Add' button to complete the process.

There is no need to repeat these steps on other K2 Servers. This information is stored centrally.

## Create Smart Objects

With the Service Instance created, add the Smart Objects.

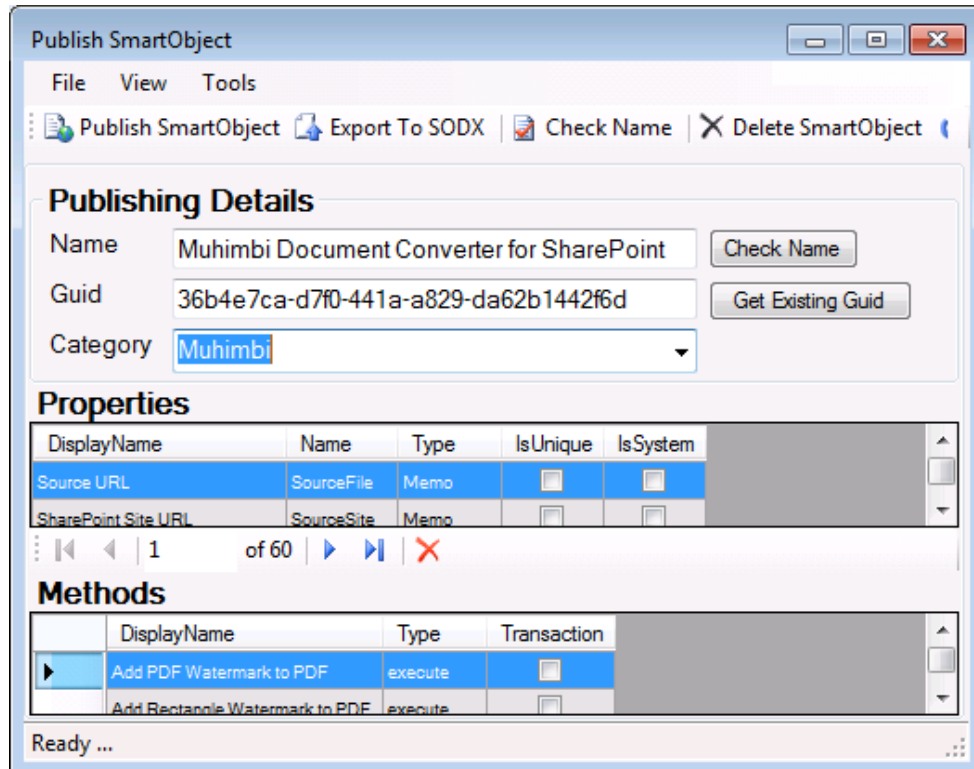
1. Navigate to and select *ServiceObject Explorer* -> *Muhimbi Document Converter for SharePoint* -> *Muhimbi Document Converter for SharePoint* -> *Muhimbi Document Converter for SharePoint*.



2. Right-click on the selected entry and choose *Create SmartObject* (if you only see *Create SmartObjects* (plural) you must navigate one level deeper).



3. Enter the following details:
  - a. **Guid:** 36b4e7ca-d7f0-441a-a829-da62b1442f6d
  - b. **Category:** Muhimbi



**Publish SmartObject**

File View Tools

Publish SmartObject Export To SODX Check Name Delete SmartObject

**Publishing Details**

Name: Muhimbi Document Converter for SharePoint

Guid: 36b4e7ca-d7f0-441a-a829-da62b1442f6d

Category: Muhimbi

**Properties**

DisplayName	Name	Type	IsUnique	IsSystem
Source URL	SourceFile	Memo	<input type="checkbox"/>	<input type="checkbox"/>
SharePoint Site URL	SourceSite	Memo	<input type="checkbox"/>	<input type="checkbox"/>

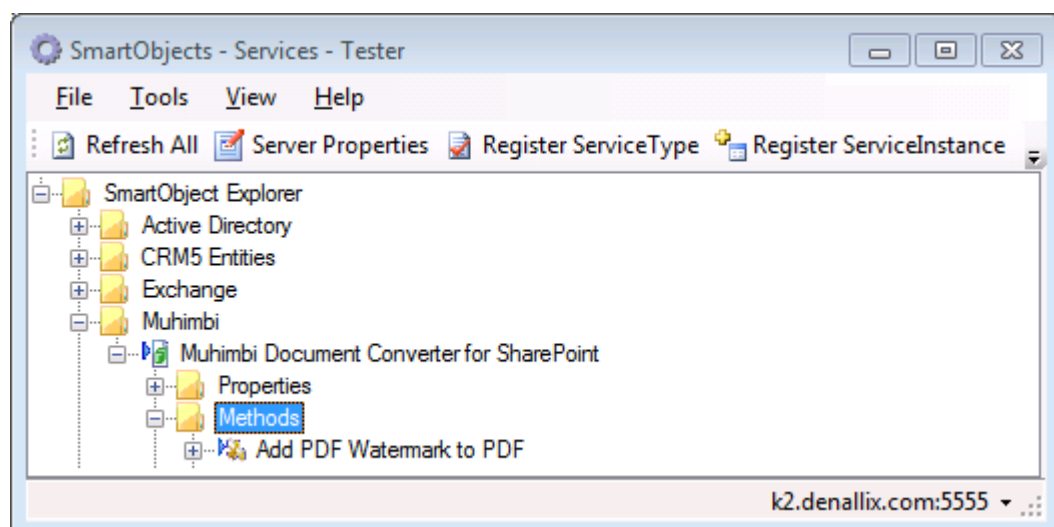
1 of 60

**Methods**

DisplayName	Type	Transaction
Add PDF Watermark to PDF	execute	<input type="checkbox"/>
Add Rectangle Watermark to PDF	execute	<input type="checkbox"/>

Ready ...

4. Click *Publish SmartObject* in the toolbar and close the window.
5. Confirm that the Smart Objects have been registered by navigating to *SmartObject Explorer* -> *Muhimbi*. This should result in a screen similar to the following.



There is no need to repeat these steps on other K2 Servers. This information is stored centrally.

## Upgrading

From time to time Muhimbi makes new versions of the software available. Although we strive to provide backwards compatibility it is recommended to upgrade the K2 Integration DLLs when deploying a new version of the PDF Converter for SharePoint. The steps are as follows:

1. Stop the *K2 blackpearl Service* using Windows' *Services.msc* facility.
2. Overwrite the existing Muhimbi DLLs with the new versions by following the instructions in the *Copy installation files* section above.
3. Update the Muhimbi Service Type:
  - a. Start the *SmartObject Service Tester* from 'C:\Program Files (x86)\K2 blackpearl\Bin\SmartObject Service Tester.exe'
  - b. Right-click on the *ServiceObject Explorer -> Muhimbi Document Converter for SharePoint* and select *Refresh ServiceType*.
4. Update the Smart Objects
  - a. Navigate to *ServiceObject Explorer -> Muhimbi Document Converter for SharePoint -> Muhimbi Document Converter for SharePoint -> Muhimbi Document Converter for SharePoint*
  - b. Right click on this node and select *Create SmartObject*
  - c. Enter the following details:
    - i. **Guid:** Click on *Get Existing Guid* - this ensures we use the same Guid as the existing SmartObject
    - ii. **Category:** Muhimbi
    - iii. Click on *Publish SmartObject* in the toolbar and select *Yes* when asked to overwrite the existing SmartObject.
5. Start the *K2 blackpearl Service*.

As per the best practices, please upgrade and test Development and Test environments before upgrading your Production environment.

## **K2 Training**

Although it is unlikely that anyone will ever deploy or use Muhimbi's PDF Converter in combination with K2 without the appropriate K2 training, the following resources are particularly relevant for those who wish to learn more about the deployment and use of SmartObjects.

Comprehensive training is available from K2. The following sessions are particularly relevant:

100.JNB Introduction to SourceCode and K2

100.SEA Workflow Fundamentals

100.IAH Building Workflow Solutions with K2 Studio - Fundamentals

100.SYD K2 SmartObjects - Fundamentals

200.DUB - K2 Workspace - Administration

200.AUS Building Workflow Solutions with K2 Studio - Intermediate

100.BRU - K2 Workspace - Reporting

Each course includes a downloadable binary with scripts to provision the lab materials on the standard K2 Core virtual machine.

## Appendix - Relevant articles on the Muhimbi Blog

The [Muhimbi Blog](#) is updated frequently with new articles related to this product. The following posts are relevant to readers of this Administration Guide.

- [Troubleshooting steps for the PDF Converter for SharePoint](#)
- [Troubleshooting InfoPath to PDF Conversion / Document Converter Architecture](#)
- [Installing The PDF Converter APP in SP2013 & SP2016 \(on-premise\)](#)
- [Performance metrics for the Muhimbi PDF Converter](#)
- [Enable SSL/HTTPS Communication in the Muhimbi Conversion Service](#)
- [Adding the PDF Converter to non standard Document and Form Libraries](#)
- [Tuning SharePoint's workflow engine](#)
- [Adding custom Converters to Muhimbi's range of PDF Conversion products](#)
- [PDF/A Support in the Muhimbi PDF Converter Services & SharePoint](#)
- [OCR Facilities provided by Muhimbi's server based PDF Conversion products](#)
- [Using the PDF Converter from a SharePoint Designer workflow](#)
- [Convert and merge multiple PDF files using a SharePoint Designer workflow](#)
- [Splitting PDF Files using a SharePoint workflow and the Muhimbi PDF Converter](#)
- [Converting multiple SharePoint files to PDF Format using Nintex workflow](#)
- [Watermark PDFs using Nintex Workflow](#)
- [Secure PDFs using Nintex Workflow](#)
- [Convert and Merge PDFs using Nintex Workflow](#)
- [Convert HTML to PDF using Nintex Workflow](#)
- [Convert file formats using Nintex workflow](#)
- [Copy Meta-Data and set content types using Nintex workflow](#)
- [Copy Meta-Data and set content types using a SharePoint Designer Workflow](#)
- [Convert SharePoint documents to PDF using K2 workflows](#)
- [SharePoint Designer workflows trigger before properties are set](#)
- [Inserting SharePoint List data into a PDF document using a workflow](#)
- [Configure PDF Security from a SharePoint Designer Workflow](#)
- [Apply User Specific PDF Security when a document is opened in SharePoint](#)
- [Watermarking features of the Muhimbi PDF Converter for SharePoint](#)
- [Applying user specific watermarks when a PDF document is opened](#)
- [Merging dynamic data into watermarks using the PDF Converter for SharePoint](#)
- [Embedding SharePoint Document IDs in PDF files and generating Short URLs](#)
- [Use SharePoint Workflows to inject JavaScript into PDFs and print the 'open date'](#)
- [Automatically convert files to PDF using an e-mail enabled Document Library](#)
- [Batch print InfoPath Forms using the PDF Converter for SharePoint](#)
- [Convert InfoPath to MS-Word, Excel, XPS and PDF](#)
- [Converting InfoPath forms including all attachments to a single PDF file](#)
- [Controlling which views to export to PDF format in InfoPath](#)
- [Using SharePoint Forms Services to convert InfoPath forms to PDF format](#)

- [Dealing with hyperlinks when converting InfoPath files to PDF format](#)
- [Convert SharePoint HTML pages to PDF format](#)
- [Converting SharePoint Lists to PDF format using a SharePoint Designer Workflow](#)
- [Converting AutoCAD \(DXF, DWG\) files to PDF](#)
- [Using Third Party AutoCAD Converters](#)
- [Convert MicroStation DGN files to PDF](#)
- [Convert TIFF files to PDF](#)
- [Convert any file format to TIFF](#)
- [Convert PCL files to PDF](#)
- [Convert legacy files formats \(Lotus Manuscript, DisplayWrite, Wordstar etc\)](#)
- [Convert Outlook MSG files to PDF including all attachments](#)
- [Convert document types \(xls to xlsx, doc to docx, xls to doc\)](#)
- [Convert files to PDF Format from .NET using a Web Services based interface](#)
- [Convert and merge files to PDF from using a Web Services based interface](#)
- [Invoking the PDF Converter Web Service from Visual Studio 2005 using vb.net](#)
- [Convert files to PDF Format from Java using Web Services](#) (WSImport)
- [Convert files to PDF Format from Java using Web Services](#) (Axis2)
- [Convert files to PDF Format from PHP using a Web Services based interface](#)
- [Convert files to PDF Format from Ruby using a Web Services based interface](#)
- [Set PDF Version, enable Fast Web Views, embed / strip fonts](#)
- [Specifying PDF Viewer Preferences](#)
- [Convert and merge files to PDF using the SharePoint User Interface](#)
- [Create Shortened \('TinyURL'\) links from your SharePoint Workflow](#)
- [Send rich emails with attachments from a SharePoint Designer Workflow](#)
- [Specifying paths and file names when using the PDF Converter for SharePoint](#)

## Appendix - Licensing

All Muhimbi products are licensed in a way that allows maximum flexibility. Please familiarise yourself with the licensing agreement, particularly section 2 – *Grant of License*, before purchasing our software.

Muhimbi's software is licensed on a per-server basis. This means that a license is required for every Production and Disaster Recovery server that runs our software. This means all Web Front End servers, all Application Servers participating in workflows ([how to determine this](#)) and all servers running the conversion service. Any K2 Workflow Servers that have our K2 integration facilities installed require a license as well.

For details see:

1. [License Agreement](#)
2. [Details about pricing & licensing](#)

In summary we support the following license types.

1. **Free evaluation version:** If the software is installed without a license then you are using the evaluation version. The software is fully functional without any time limits, but an evaluation message will be displayed on most screens, in the workflow history and in any generated document. It is not permitted to use the evaluation version in production environments. Support is provided using any of the means in the Support area on our website.
2. **Basic License:** Starter edition for SharePoint farms consisting of a single combined WFE / App server.
3. **Small Farm License:** Covers a single SharePoint farm consisting of up to 3 servers with support for load balancing and redundancy.
4. **Enterprise License:** Covers an unlimited number of SharePoint Farms, Servers and Users in a single legal entity.

Please note that some older license types have been discontinued. However, these are still valid for those customers that have purchased them in the past. Please see the License Agreement for details about these old style licenses.

## PDF Converter license types

*The PDF Converter for SharePoint license is limited to use from SharePoint environments only. If you wish to invoke the PDF Conversion Service from a non-SharePoint based environment, e.g. Java, .NET or any other Web Services capable system then you will need to purchase a license for the PDF Converter Services, which is a separate product.*

*The PDF Converter Professional license is an add-on that adds additional functionality to either the PDF Converter for SharePoint or the PDF Converter Services. This functionality, e.g. PDF/A post-processing and OCR, is usually associated with more complex environments and has therefore been separated from the main product. Please note that the PDF Converter Professional is a license that must be applied alongside a valid license of the PDF Converter for SharePoint or PDF Converter services. A separate download of the Professional version of the software is not needed, the license unlocks all functionality.*